



**US Army Corps  
of Engineers®**  
Wilmington District

## **General Re-evaluation Report and Environmental Assessment Surf City, Onslow and Pender Counties, North Carolina Coastal Storm Risk Management Project**



### **Appendix H: Essential Fish Habitat Assessment Final February 2025**

## Table of Contents

1.0	Introduction .....	H-5
2.0	Purpose .....	H-8
3.0	Proposed Action .....	H-8
4.0	Evaluation of Impacts on EFH Species .....	H-10
5.0	Proposed Mitigation .....	H-22
6.0	Conclusion and Agency Review .....	H-35
7.0	References .....	H-36
	Appendix A: Medium and Low Impact Potential EFH .....	H-47
	Appendix B: South Atlantic Predictive Models .....	H-53

## List of Figures

Figure 1. Project Area .....	H-7
------------------------------	-----

## List of Tables

Table 1. Classification and values associated with the proposed Borrow Area A (modified from CMECS). .....	H-10
Table 2. Essential Fish Habitat species and life stages that overlap the proposed borrow area with “high” impact potential. ....	H-13
Table 3. Probability of presence for selected EFH species in Borrow Area A and the surrounding marine environment. All items reported are mean values. ....	H-21
Table 4. Probability of presence for selected EFH species in Borrow Area N and the surrounding marine environment. All items reported are mean values. ....	H-21
Table 5. List of HAPCs that overlap the project area. ....	H-22
Table 6. The 2010 Feasibility/EIS Environmental Commitments with Updates. ....	H-24
Table 7. Additional Environmental Commitments. ....	H-35

## **List of Abbreviations and Acronyms**

AUC	Area Under the Curve
BMPs	Best Management Practices
BOEM	Bureau of Ocean Energy Management
CFR	Code of Federal Regulations
cm	centimeter(s)
CMECS	Coastal and Marine Ecological Classification Standard
CR	Conservation Recommendations
cy	cubic yards
EA	Environmental Assessment
EEZ	Exclusive Economic Zone
EFH	Essential Fish Habitat
EIS	Environmental Impact Statement
FONSI	Finding of No Significant Impact
FMC	Fisheries Management Council
FMP	Fisheries Management Plan
ft	foot/feet
GC	Geoform Component
GOM	Gulf of Mexico
GPS	global positioning system
HAPC	Habitat Areas of Potential Concern
in	inch(es)
km	kilometer
m	meter(s)
m <sup>3</sup>	cubic meters
mm	millimeter(s)
MMP	Marine Minerals Program
MSFCMA	Magnuson-Stevens Fisheries Conservation & Management Act
NEPA	National Environmental Policy Act

NMFS	National Marine Fisheries Service
NOAA	National Oceanic and Atmospheric Administration
NVGD	National Geodetic Vertical Datum
PIANC	The World Association for Waterborne Transport Infrastructure
ppt	parts per thousand
TSHD	trailing suction hopper dredges
TSS	total suspended sediments
SARBO	South Atlantic Region Biological Opinion
SC	Substrate Component
SS	suspended sediments
unk	unknown
USACE	U.S. Army Corps of Engineers

## 1.0 Introduction

The purpose and need of this project is to reduce the impacts and risks associated with erosion, flooding, storm surge and wave attack created by severe coastal storms and sea-level change for the Town of Surf City, North Carolina. In addition, if implemented, the project would enhance the beach strand available for recreation use and provide habitat for a variety of plants and animals.

*An Integrated Feasibility Report and Environmental Impact Statement, Coastal Storm Damage Reduction, Surf City and North Topsail Beach, North Carolina, December 2010* (2010 EIS) was prepared to evaluate coastal storm risk management along Surf City and North Topsail Beach (SCNTB). In addition, a supplemental *Environmental Assessment for West Onslow Beach and New River Inlet (Topsail Beach) and Surf City and North Topsail Beach Coastal Storm Damage Reduction Projects, July 2013* (2013 EA) was prepared to address changes that were implemented after the Environmental Impact Statements (EISs) for both projects were completed.

The Surf City (SC) Coastal Storm Risk Management (CSRM) General Reevaluation Report and Environmental Assessment (GRR/EA) proposes an implementable Federal project for Surf City and proposes to deauthorize the originally authorized project, that include the Town of North Topsail Beach. The GRR/EA addresses changes in sediment volumes, borrow areas and the borrow area use plan, dredging and placement window alternatives, and updates to the environmental monitoring/commitments included in the 2010 Feasibility/EIS. By coordination of this document with the National Marine Fisheries Service (NMFS), consultation is officially initiated and concurrence with the findings is requested. The U.S. Army Corps of Engineers Wilmington District (USACE) is the lead federal agency under the NEPA process and associated environmental compliance activities. Pursuant to 40 CFR 1501, the Bureau of Ocean Energy Management (BOEM) is serving as a cooperating agency as the project proposes to utilize a series of potential borrow areas in federal waters adjacent to the project site. Since BOEM has jurisdiction by law over mineral leasing in the Outer Continental Shelf (OCS) beyond three miles, this 2024 GRR/EA will support BOEM's decision regarding issuance of leases for those portions of the proposed borrow areas outside the three-mile limit. BOEM will also serve as a cooperating agency for consultation requirements related to Magnuson–Stevens Fishery Conservation and Management Act (MSFCMA) (16 USC 1801).

Potential project effects on Essential Fish Habitat (EFH) species and their habitats have been evaluated and were addressed the 2010 EIS. In our letter dated January 13, 2010, the USACE requested consultation under the EFH provisions of the Magnuson-Stevens Act. The NMFS letter dated March 8, 2010, made the following Conservation Recommendations:

1. Before construction begins, the USACE shall provide NMFS with a map and description of the pipeline corridors relative to live/hard bottom habitats. The description shall include measures the USACE would take to ensure minimal impacts would occur to NOAA trust resources.

2. The USACE shall coordinate with NMFS on the final design of the sampling programs for examining impacts to benthic invertebrate communities and sedimentation on live/hard bottom areas; this coordination shall occur well in advance of baseline sampling.
3. The USACE shall reinitiate EFH consultation with the NMFS Habitat Conservation Division should any in-water work be proposed outside the period of November 15 to March 31.

On April 5, 2010, the USACE concurred with the EFH conservation recommendations. EFH impacts were evaluated in the 2013 EA, but an EFH assessment was not conducted.

The project is in Pender and Onslow counties in the town of Surf City, North Carolina. Topsail Island is a 22-mile-long barrier island on North Carolina's south-central coast consisting of three communities, from south to north—Topsail Beach, Surf City, and North Topsail Beach. The footprint of the proposed action includes the sub-aerial beaches of Surf City as well as the marine environment offshore of the barrier island.

See **Figure 1** for more information on the project area. For this EFH Assessment, Borrow Areas A and N were analyzed as “bookends” to the project area, representing the most inshore, northwest portion (i.e., Borrow Area A) and offshore, southeast portion (i.e., Borrow Area N). The detailed analysis of these two borrow areas has been combined and serves as a proxy for all 13 of the potential borrow areas (A, B, C, D, E, F, G, H, J, L, N, O, and P) in the project area. Throughout this report, then, while one or both borrow areas may be referenced, it is assumed that the conditions would be similar across all borrow areas, unless noted otherwise.

Additional information regarding the proximity of the project to features of interest not covered in this report can be obtained through the BOEM and the National Oceanic and Atmospheric Administration (NOAA) Ocean Reporting Tool (NOAA 2018b).

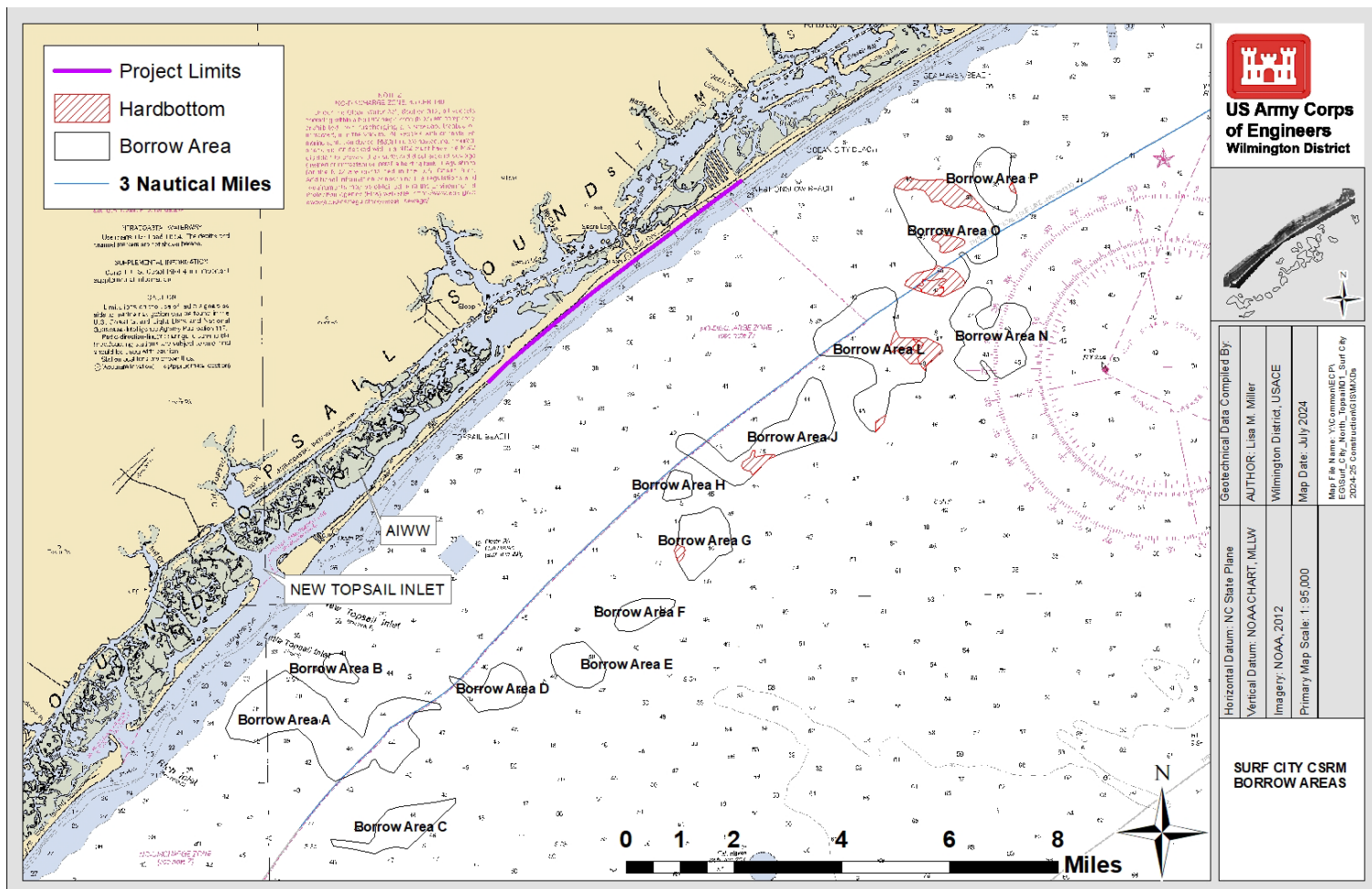


Figure 1. Project Area

## **2.0 Purpose**

Provisions of the Magnuson–Stevens Fishery Conservation and Management Act (MSFCMA) (16 USC 1801) require that EFH areas be identified for each species managed under a fishery management plan, and that all Federal agencies consult with the National Marine Fisheries Service (NMFS) on all Federal actions that may adversely affect EFH. EFH is defined as “those waters and substrate necessary to fish for spawning, breeding, feeding or growth to maturity.” This EFH assessment is being prepared pursuant to Section 305(b)(2) of the MSFCMA and includes the following required parts: 1) identification of species of concern; 2) a description of the proposed action; 3) an analysis of the effects of the proposed action; 4) proposed mitigation; and 5) the Federal agency’s views regarding the effects of the proposed action. The purpose of this consultation process is to address specific federal actions that may adversely affect EFH, but do not have the potential to cause substantial adverse impact.

## **3.0 Proposed Action**

The Surf City Coastal Storm Risk Management project would consist mainly of a sand berm and dune system along approximately 33,300 linear feet, or approximately 6 miles of shoreline. The dune will be constructed to an elevation of 14 feet North Atlantic Vertical Datum 1988 (NAVD 88) with a 25-foot-wide dune crest, fronted by a 50-foot-wide berm at an elevation of 6 feet (NAVD 88). The plan will include a 1000-foot transition berm at the northern end of the project between the town limits of Surf City and North Topsail Beach. The proposed action is to perform initial construction (only) any time of year. Two hopper dredges are assumed to be used for the initial construction and one hopper dredge is assumed for nourishments. Dredging depths and the two-foot dredging buffer will be the same as discussed in the 2010 EIS, but production rates may change due to protective screening measures for Munitions and Explosives of Concern. The scope of the proposed action includes initial construction (~6.4 million cubic yards (MCY)) and the seven nourishment events (~13.8 MCY) totaling approximately 21.8 MCY for the life of the 50-year project. Initial construction would result in one disturbance event, lasting approximately 16 months, from dredges and all other required equipment in the water and on the beach. Eliminating the environmental window for initial construction will avoid at least two winter seasons of dredging along with reducing the number of disturbance events to one as compared to the four disturbance events under Alternative 2a, Authorized Plan for Surf City with Environmental Windows. The periodic nourishment interval for the project remains at six years with a total of seven nourishment events. Nourishment would occur between November 16 to April 30, which is the current beach placement window and nourishment events would be accomplished in one dredging season. The identified borrow areas offshore of Topsail Island have sufficient beach quality sediment to support initial construction and each nourishment event (6-year renourishment interval) for the 50-year life of the project. Pipeline routes and hopper pump-out locations have not yet been identified; however, once they are identified, USACE will implement the following strategy to avoid effects to hardbottom:

1. The construction contractor in coordination with the USACE will survey potential pipeline and pumpout locations for hardbottom (and cultural resources).



2. All information associated with the surveys, data analysis, identification and mapping of pipeline corridors and pumpout locations and subsequent measures developed to avoid resource impacts would be coordinated with the resource agencies before construction. The USACE will place buffers of 500 meters (1,640 ft.) for high- and moderate-relief hardbottom and 122 meters (400 ft.) for low relief hardbottom.

The Coastal and Marine Ecological Classification Standard (CMECS) provides a national framework for organizing information about coasts and oceans and their living systems. The six elements of the standard represent the different aspects of the seascape (water column, geoform, substrate, biotic communities, biogeographic setting, and aquatic setting), starting with the broadest systems (marine, estuarine, and lacustrine) and narrowing to the most detailed physical and biological features associated with a specific habitat type (biotic community). Descriptive information such as salinity, turbidity, rugosity (small-scale variations of amplitude in the height of a surface), and percent cover are included in CMECS as modifiers. Endorsed by the Federal Geographic Data Committee, federally funded projects working with environmental data in marine settings use CMECS as their primary classification system or include CMECS attributes for their data.

Borrow Area A ranges in depth from 11.0m (36.08ft) to approximately 15.0m (49.2ft). Borrow Area N ranges in depth from 13.0m (42.64ft) to approximately 15.0m (49.2ft). The resources' Geoform Component (GC) and Substrate Component (SC) under CMECS are unknown. For additional CMECS variables that define Borrow Area A please see **Table 1**. Borrow Area N has similar attributes, which is also expected for all borrow areas within the project area.

The suite of borrow areas identified for this project have not been dredged previously; however, other borrow sources, such as existing navigation channels, have been used for placement of beach quality sand on Topsail Island.

While hard bottoms are most abundant in southern portions of North Carolina, they occur along the entire NC coast. Based on multiple surveys conducted offshore of Topsail Island, hard bottom communities are primarily located offshore of Surf City and North Topsail Beaches. According to Cleary (2003), the environment offshore of the project area is characterized by an undulating, relatively flat, hard bottom platform punctuated by scattered, low-relief, hard bottom scarps (moldic limestone and siltstone) and sediment-filled depressions. Side scan sonar and diver ground truth data were used to identify and delineate low, moderate, and high relief hard bottom features within the proposed borrow areas. Mitigative buffers were established in the EIS to avoid direct and indirect impacts to these resources and include a 500-meter, hard bottom buffer around high- and moderate-relief hard bottom and a 122-m (400-ft.) buffer around low-relief hard bottom. Detailed hard bottom discussions for the Surf City project are included within the referenced EIS and Section 5 of the 2024 GRR/EA.

**Table 1. Classification and values associated with the proposed Borrow Area A (modified from CMECS).**

Attribute	Value	Unit
Magnitude of Bottom Current - January	0.01	m/s
Magnitude of Bottom Current - February	0.01	m/s
Magnitude of Bottom Current - March	0.01	m/s
Magnitude of Bottom Current - April	0.02	m/s
Magnitude of Bottom Current - May	0.04	m/s
Magnitude of Bottom Current - June	0.04	m/s
Magnitude of Bottom Current - July	0.05	m/s
Magnitude of Bottom Current - August	0.04	m/s
Magnitude of Bottom Current - September	0.04	m/s
Magnitude of Bottom Current - October	0.03	m/s
Magnitude of Bottom Current - November	0.02	m/s
Magnitude of Bottom Current - December	0.01	m/s
Rugosity	1.0	
Slope Range	0.0 - 0.41	Degrees
Orientation	281.1	Degrees
Bathymetric Position Index (BPI) (a measure of where a referenced location is relative to the locations surrounding it)	0.95	
Dissolved Oxygen Minimum	4.61	mg/L
Temperature Range	11.77 - 27.36	Degrees C

Threatened and endangered species could be present within the project areas, and they include: sea turtles [green (*Chelonia mydas*), loggerhead (*Caretta caretta*), leatherback (*Dermochelys coriacea*), and Kemp's ridley (*Lepidochelys kempii*); North Atlantic right whale (*Eubalaena glacialis*); shortnose sturgeon (*Acipenser brevirostrum*); Atlantic sturgeon (*Acipenser oxyrinchus oxyrinchus*); and West Indian manatee (*Trichechus manatus*). Further discussion of Threatened and Endangered species can be found in Section 5 of the 2024 GRR/EA.

#### 4.0 Evaluation of Impacts on EFH Species

Fish species' presence within waters of the project impact area is highly variable, both spatially and temporally. Presence can vary for highly migratory species, among life stages, and seasonally.

The short-term impacts of dredging on fish include entrainment, physiological or behavioral changes due to human-made sounds, loss of prey/food web effects, loss of bottom substrate, and effects due to suspended and resuspended sediment plumes, sedimentation of the seafloor, and the potential release of contaminants (Kim et al. 2008; Suedel et al. 2008; Wenger et al. 2017). Hopper and cutterhead dredges use hydraulic suction fields to obtain and transport unconsolidated sediments from aquatic ecosystems. These actions may result in the *entrainment* of fish and shellfish, as

defined as the direct uptake of organisms due to the hydraulic suction field generated by a draghead or cutterhead dredge (Reine et al. 1998).

Sounds from dredging operations are produced from vessels in transit to/from the dredging location, supporting vessels, and the dredging operation itself (see Reine et al. 2014a; Reine et al. 2014b; Robinson et al. 2012; Pickens and Taylor 2020).

Underwater sounds emitted from dredging operations are of the amplitude to affect the behavior of fish at a considerable distance from the dredge operation (~400-1,200 m). However, the maximum sound levels emitted by dredge activities are restricted to approximately 0-300 m from the source of the vessel. These sounds are not at a level that would result in mortality or severe injury. At the closest proximities, effects may include permanent or temporary hearing impairment. Expected behavioral changes where sound is above ambient conditions may include avoidance, masking of conspecific communication, masking of predator or prey detection, or other behavioral changes. Avoidance could have severe consequences if the area is critical for spawning, habitat is limited in the near vicinity, migratory corridors are blocked, or the area is important for other life history requirements (Pickens and Taylor 2020).

Regarding suspended sediments, the rotation of the cutterhead itself (for cutterhead dredges) produces substantial sediment resuspension in the lower part of the water column; plume concentrations at the surface of the water column may be half of the concentration at the bottom (Havis 1988). Overflow from hopper dredges can be extremely turbid in close proximity to the dredge, as fine-grained total suspended sediments (TSS) may reach >750 mg/L (Havis 1988). Additionally, undesirable fine sediments may be discarded in the sorting and screening process (Michel et al. 2013; Sutton et al. 2009). Havis (1988) compared trailing suction hopper dredges (TSHD) and cutterhead dredges, and showed TSS concentrations were much greater for TSHD (with overflow allowed), particularly at greater depths. Potential responses of fish to suspended solids (SS) are avoidance, changes in foraging and predation rates, physiological stress, reduced growth, physical damage, and mortality of adults, juveniles, larvae, or eggs (Kjelland et al. 2015; Wilber and Clarke 2001). Fish eggs and larvae are particularly susceptible to sedimentation and SS; this may be because of their lack of mobility, relatively high oxygen demand, and/or anatomy (Appleby and Scarratt 1989; Wilber and Clarke 2001). The reaction distance of adult fish in response to planktonic prey are directly and negatively related to turbidity (Utne-Palm 2002; Wilber and Clarke 2001). Negative impacts to fish habitat may also include sedimentation of hard bottom or damage/mortality of corals from sedimentation or SS (Erftemeijer et al. 2012; Linderman and Snyder 1999; Pickens and Taylor 2020).

Long-term impacts to fish from offshore dredging operations include loss of physical habitat and suspended/resuspended sediment plumes. Although most studies measure turbidity over hours to a few days following dredging, Fisher (2015) showed turbidity fluxes over 1 ½ years after dredging; turbidity fluxes were not observed >2 km from the initial dredge site. Overall, the pattern has emerged that extremely high turbidity occurs for a relatively short duration (10-15 minutes) during and immediately following dredging. The area most affected by high TSS and sedimentation is generally 300-600 m from the dredge site, but some effects are expected to 3 km. Under certain

oceanographic conditions, sediments plumes may extend up to 20 km from the dredge site. Recommendations for best practices for dredging near corals, and coral reefs, are further provided by The World Association for Waterborne Transport Infrastructure (PIANC) (2010). All species listed in **Table 2** may be more vulnerable to long-term impacts due to dredging operations.

Some species/life stages classified as 'medium' or 'low' in the 'Impact Potential' column in Appendix A may lack a depth of information regarding the environmental conditions at which they have been observed and/or they lack information on their temporal presence within the proposed borrow area as specified in Fisheries Management Plans. Further review of the existing body of scientific literature may reveal information that can be used to fill in these knowledge gaps. Another important note regarding this report is that distribution and/or abundance information specifically for important forage species for EFH species was not considered but may exist as part of species models or as part of the data that was used in the creation of EFH GIS shapes.

#### **4.1. EFH Species with High Potential for Impacts**

The species listed in **Table 2** are those that have an affinity for sand/sediment resources, overlap depth, temporal, and temperature ranges in the project area, and have demersal habits, indicating potential use of the proposed borrow areas. Some species are lumped into groups for EFH purposes and therefore will have identical EFH descriptions. Three species (gag grouper, summer flounder and the scalloped hammerhead shark) will be evaluated and used as a broad assessment of impacts to EFH species with high potential for impacts.

##### **4.1.1. Gag Grouper**

Wickliffe et al. 2014, states the Gag is a large (up to 47.2 in total length), 85.9 lbs. max weight) epinepheline serranid economically important in recreational (Huntsman 1976) and commercial (Rohde and Francesconi 1992) fisheries in the Carolinas (Ross and Moser 1995, Heemstra et al. 2002, Adamski et al. 2012, Murdy and Musick 2013). Gag have an estuarine dependent life cycle and are one of the most abundant Groupers in the southeast, ranging from Massachusetts into the Gulf of Mexico, (Briggs 1958, Smith 1971, Hardy 1978, Ross and Moser 1995, NOAA 2014, Sedberry and Reichert 2015, NCDENR 2018).

Gag spawn during late winter to early spring (January to May), peaking in March and April in the Carolinas (McGovern et al. 1998, Sedberry et al. 2006, Sedberry and Reichert 2015). Gag larvae develop for approximately 43 days (Keener et al. 1988, McGovern et al. 1998), after which they recruit to estuaries during flood tides (MARMAP 1998). Early juveniles ingress into South Carolina estuaries from April through June, peaking in April (Sedberry and Reichert 2015) and early May (Powles 1977, Collins et al. 1987, Keener et al. 1988, MARMAP 1998). The earliest collections of young juveniles in North Carolina were in May and June (Ross and Moser 1995). Additionally, larval and early juvenile Gag abundance was reported highest from June through September sampling period in North Carolina estuarine waters, with highest from late April to mid-May with peak

**Table 2. Essential Fish Habitat species and life stages that overlap the proposed borrow area with “high” impact potential.**

	Life Stage	Season	Temp	Water Column Zone	Sand Affinity	Depth Range	Impact Potential
<b>Borrow Areas A and N</b>							
<b>Atlantic Butterfish</b>	Juveniles	All	X	X	X	X	High
	Spawning Adults	All	X	unk	X	unk	High
<b>Atlantic Sharpnose Shark</b>	Adults	All	unk	unk	X	X	High
	Juveniles	All	X	unk	X	X	High
	Mating/Birthing	Spring, Summer, Fall	unk	unk	X	unk	High
	Neonate/YOY	All	X	unk	X	X	High
<b>Bank Sea Bass</b>	Adults	All	unk	X	X	unk	High
	Spawning Adults	Fall, Winter, Spring	unk	unk	X	unk	High
<b>Bar Jack</b>	Adults	All	unk	unk	X	X	High
	Juveniles	All	unk	unk	X	X	High
	Spawning Adults	All	unk	unk	X	unk	High
<b>Black Sea Bass</b>	Adults	All	unk	unk	X	X	High
	Spawning Adults	Spring, Summer, Fall	unk	unk	X	unk	High
<b>Blacknose Shark</b>	Juveniles; Adults	All	X	X	X	X	High
<b>Blacktip Shark</b>	Neonate/YOY	All	unk	unk	X	X	High
<b>Bluefish</b>	Adults	All	unk	unk	X	unk	High
	Eggs	Spring, Summer	X	unk	X	unk	High
	Juveniles	All	unk	unk	X	unk	High
	Larvae	Spring, Summer, Fall	X	unk	X	unk	High
<b>Clearnose Skate</b>	Adults	All	X	X	X	X	High
	Juveniles	All	X	X	X	X	High

	Life Stage	Season	Temp	Water Column Zone	Sand Affinity	Depth Range	Impact Potential
<b>Gag</b>	Juveniles	All	unk	unk	X	unk	High
	Spawning Adults	Winter, Spring	unk	unk	X	unk	High
<b>Golden Tilefish</b>	Spawning Adults	Spring, Summer, Fall	unk	X	X	unk	High
<b>Goliath Grouper</b>	Spawning Adults	Summer, Fall	unk	unk	X	unk	High
<b>Gray Snapper</b>	Adults	All	unk	unk	X	X	High
	Spawning Adults	Summer, Fall	unk	unk	X	unk	High
<b>Gray Triggerfish</b>	Juveniles	All	unk	unk	X	unk	High
	Adults	All	unk	unk	X	X	High
	Spawning Adults	Spring, Summer	unk	unk	X	unk	High
<b>Jolthead porgy</b>	Adults	All	unk	unk	X	X	High
<b>Margate</b>	Spawning Adults	All	unk	unk	X	unk	High
<b>Red Porgy</b>	Adults	All	unk	unk	X	X	High
	Spawning Adults	Fall, Winter, Spring	unk	unk	X	unk	High
<b>Rock Sea Bass</b>	Adults	All	unk	unk	X	unk	High
<b>Sand Tiger Shark</b>	Adults	All	X	unk	X	X	High
	Neonate/YOY; Juveniles	All	X	unk	X	X	High
<b>Sand Tilefish</b>	Adults	All	unk	X	X	X	High
<b>Sandbar Shark</b>	Juveniles	All	X	X	X	X	High
	Neonate/YOY	Spring, Summer, Fall	X	X	X	X	High
	Spawning Adults	Spring, Summer	X	unk	X	unk	High
<b>Saucereye porgy</b>	Larvae; Juveniles	All	unk	unk	X	unk	High
<b>Scalloped Hammerhead Shark</b>	Juveniles; Adults	All	unk	unk	X	unk	High
<b>Scup</b>	Spawning Adults	Summer	unk	unk	X	unk	High

	Life Stage	Season	Temp	Water Column Zone	Sand Affinity	Depth Range	Impact Potential
<b>Spinner Shark</b>	Adults	All	unk	unk	X	X	High
	Juveniles	All	X	unk	X	X	High
	Neonate/YOY	All	X	unk	X	unk	High
	Spawning Adults	Spring, Summer	unk	unk	X	unk	High
<b>Summer Flounder</b>	Adults	All	unk	X	X	X	High
	Juveniles	All	X	X	X	X	High
<b>Tiger Shark</b>	Juveniles; Adults	All	unk	X	X	unk	High
	Neonate; YOY	All	unk	X	X	unk	High
<b>Tomtate</b>	Adults	All	unk	unk	X	X	High
	Spawning Adults	Spring, Summer	unk	unk	X	unk	High
<b>Windowpane Flounder</b>	Adults	All	X	unk	X	X	High
	Juveniles	All	X	unk	X	X	High
	Spawning Adults	Fall, Winter, Spring	X	unk	X	unk	High
<b>Borrow Area A Only</b>							
<b>Blacktip Shark</b>	Juveniles; Adults	All	X	unk	X	X	High
<b>Sailfish</b>	Adults	All	unk	unk	X	X	High
	Juveniles	All	unk	unk	X	unk	High
<b>Borrow Area N Only</b>							
<b>Longfin Inshore Squid</b>	Eggs	All	X	X	X	X	High

( Information in this table was gathered from official EFH documentation when available or other well recognized studies of sand affinity (noted in the shoalMATE study report). X's indicate that the proposed area matches the habitat criteria for the species/life stage combination to determine the possibility that a species/life stage with an overlapping EFH polygon may utilize the proposed area. The use of "unk" indicates that the habitat parameter was not defined for that species/lifestage combination in the documentation and is treated as a match to indicate that particular care should be taken in researching the impacts on these species. An "X" in the Water Column Zone field indicates the species is known to be demersal for some portion of that lifestage (as opposed to pelagic). The impact potential is a qualitative assessment based on the combination of results for the four parameters in this table. Species/life stages with "medium" or "low" potential impact from dredging are listed in Appendix A.)

ingress around new moons (Adamski et al. 2012, unpub. Bridgenet data). Juvenile Gag were caught from June through September sampling period in North Carolina estuarine waters, with highest catch per unit effort from July through August (Adamski et al. 2011).

Larval and juvenile transport from offshore spawning locations, away from adult populations to estuarine nursery areas is a critical component of Gag life history. The interactions between spawning locations, physical processes, salinity, temperature, chemical cues, and habitat preferences are critical in determining larval settlement in estuaries (Peterson et al. 2000, Brown 2002). Both natural and maintained inlets in North Carolina and South Carolina are important habitat related to the migration dynamics of Gag and other estuarine dependent species of snapper and grouper (Peters et al. 1995, Peters and Settle 1994, Tzeng et al. 2003). Juvenile Gag live in estuarine waters during their first summer, typically residing in habitats high in salinity with natural and artificial structure. Juveniles prefer oyster reefs and shell rubble, seagrass beds, dredged canals, pilings, rock jetties, and artificial reefs (Keener et al. 1988, Ross and Moser 1995, Mullaney and Gale 1996, Koenig and Coleman 1998). In North Carolina, Gag have been observed to move from seagrass beds to these complex substrates within estuaries between late June and July (Ross and Moser 1995, Adamski 2009). Massive emigration from estuaries to nearshore ocean hard bottom habitats occurs in the fall (October) with the concurrent drop in water temperature (Ross and Moser 1995). Adult Gag can be found at depths of 15 to 107 m (49 to 351 ft) along the continental shelf once they leave the estuaries (Moser and Taylor 1995, Heemstra et al. 2002, SCDNR MARMAP unpublished data). In offshore waters, Gag occupy natural and artificial reefs, including wrecks, hard bottom, shelf-edge scarps, ledges, sponge/coral habitats, and various other habitats providing vertical relief from the bottom (Mullaney 1994, Koenig and Coleman 1998, Sadovy de Mitcheson and Colin 2011).

#### **4.1.2. Summer Flounder**

Summer Flounder (*Paralichthys dentatus*) are found in inshore and offshore waters ranging from Nova Scotia, Canada to the east coast of Florida (Ginsburg 1952, Bigelow and Schroeder 1953, Anderson and Gehringer 1965, Guthertz 1967, Gilbert 1986, Scott and Scott 1988, Grimes et al. 1989, Klein-MacPhee 2002, Sackett et al. 2007, Able et al. 2010, Able and Fahay 2010). In the United States, Summer Flounder are most abundant along the continental shelf and adjoining estuaries from Cape Cod, Massachusetts to Cape Fear, North Carolina (Hildebrand and Schroeder 1928, Wilk et al. 1980, Grosslein and Azarovitz 1982, Able and Kaiser 1994, Able and Fahay 1998, ASMFC 2015). Juveniles and adults have seasonal inshore/offshore migrations, with movements into shallow estuaries or coastal areas in the spring, estuarine residence through the summer, and movement out of estuaries (emigration) and nearshore habitats in late summer and fall, overwintering on the edge of the continental shelf. Summer Flounder are one of the most sought after commercial and recreational fishes along the Atlantic coast.



Summer Flounder are batch spawners, spawning more than once in a spawning season in response to environmental conditions. They spawn as they move from bays and estuarine grounds to the coasts and open ocean along the continental shelf (Packer et al. 1999, Able et al. 2010). Summer Flounder spawn throughout the fall and winter as fish emigrate offshore or onto their wintering grounds (Packer et al. 1999). Offshore migration is correlated to cooling temperatures and decreasing photoperiod in the fall (Packer et al. 1999).

Summer Flounder eggs (1 mm, or 0.04 in, in diameter) are transparent, pelagic, and buoyant and have been found at depths of 30 to 70 m (98 to 230 ft) in the fall, as deep as 110 m (360 ft) in the winter, and between 10 and 30 m (33 to 98 ft) in the spring (Henderson-Arzapalo et al. 1988, Powell and Henley 1995, Packer et al. 1999). Rate of Summer Flounder egg development is positively correlated with temperature, with increasing developmental rate occurring with increasing temperatures (Packer et al. 1999). Peak abundances for eggs in the fall occur at temperatures around 14 to 17 °C (57 to 63 °F) (Reid et al. 1999). Watanabe et al. (1999) experimentally showed higher temperatures and salinity increased the rate of embryonic development through hatching, but at high temperature and low salinity, inhibition of hatching and growth of embryos occurred. Conversely, a low temperature of 16 °C (61 °F) at low salinities enhanced larval survival indicating a low temperature–low salinity synergistic effect. Watanabe et al. (1999) therefore posits moderate to high survival under all salinities at 16 °C reflects an adaptability of the yolk sac larvae to inshore movement during the pelagic larval phase. Eggs hatch between 72 and 75 hours post fertilization (Smith and Fahay 1970) with unpigmented eyes and no fin buds or mouth parts, surviving off the yolk-sac during initial development (Smith and Fahay 1970). After about two to three days, the yolk-sac is exhausted, and larvae have formed critical organs allowing them to begin consuming small planktonic food (Bisbal and Bengtson 1995).

Larvae begin swimming upright and stay in this orientation until ingress into estuarine nursery grounds occurs during nighttime flood tides (late-stage larvae, Burke et al. 1998). Metamorphosis from larvae to juvenile generally takes between 30 to 70 days post hatch. Once metamorphosis occurs, individuals leave the water column, settle to the bottom and generally bury themselves in sediment to complete development to the juvenile stage (Keefe and Able 1993, 1994). Ingress patterns in Beaufort Inlet, North Carolina indicate larvae occurred from December through the end of the sampling period in May, but larvae were most abundant from February through April (Able et al. 2010). In February, most were transforming larvae, but by March a portion were completely settled juveniles (11 to 21 mm [0.3 to 0.8 in] SL) (Packer et al. 1999). In South Carolina, peak larval densities occurred in North Inlet estuary in February and March (Burns 1974), in the Port Royal Sound from January through March (Bearden and Farmer 1972), in the Charleston Harbor from January to April (Wenner et al. 1990), and in the Chainey Creek area around the same period (Wenner et al. 1986). Notably, some Summer Flounder emigrate early in the summer or temporarily emigrate out of estuaries (Sackett et al. 2007, Capossela 2010).

These early migrations are likely not related to offshore spawning, but rather these individuals may occupy habitats on the inner continental shelf or move among coastal estuarine systems (Capossela 2010).

Juveniles are distributed in bays, sounds, and many estuaries throughout the species range during spring, summer, and fall (Deubler 1958, Poole 1966, Miller and Jorgenson 1969, Powell and Schwartz 1977, Fogarty 1981, Able and Kaiser 1994, Rountree and Able 1997, Walsh et al. 1999). Patterns of juvenile estuarine use vary by latitude (Packer et al. 1999). Juveniles in southern waters generally overwinter in bays and sounds (Able and Kaiser 1994). In North Carolina sounds, juveniles often remain for 18 to 20 months (Powell and Schwartz 1977). Juveniles located offshore return to coasts and bays in the spring and generally stay the entire summer (Packer et al. 1999). Once estuarine residency is established, individuals will only make minor movements as they become sedentary until fall migration (Desfosse 1995, Capossela 2010). Estuarine waters west and northwest of Cape Hatteras, North Carolina (Monaghan 1996) and in high salinity bays and tidal creeks of Core Sound (Noble and Monroe 1991), serve as significant nursery areas for juvenile Summer Flounder. Powell and Schwartz (1977) found that juveniles were most abundant in the relatively high salinities of the eastern and central parts of Pamlico Sound, all of Croatan Sound, and around inlets (Packer et al. 1999). Age-0 juveniles in the Pamlico Sound and Croatan Sound areas disappeared from the catch in late summer, suggesting that these fish are leaving estuarine habitats at that time (Powell and Schwartz 1977). Juveniles located from Cape Hatteras northward enter the north-south, inshore-offshore movement of the Bight once exiting the estuaries (Monaghan 1996). In contrast, those juveniles south of Cape Hatteras in the South Atlantic Bight, do not exhibit the same inshore-offshore, north-south migratory movement; juveniles > 11.8 in total length are rarely found in North Carolina estuaries, but larger fish are found around the inlets and along coastal beaches (Packer et al. 1999).

#### **4.1.3. Scalloped hammerhead shark**

Miller et al. (2014) describe the scalloped hammerhead shark as a circumglobal species that lives in coastal warm temperate and tropical seas. It occurs over continental and insular shelves, as well as adjacent deep waters. Scalloped hammerhead sharks are highly mobile and partly migratory, making migrations along continental margins as well as between oceanic islands in tropical waters.

Scalloped hammerhead sharks are highly mobile and partly migratory and are likely the most abundant of the hammerhead species (Maguire et al. 2006). These sharks have been observed making migrations along continental margins as well as between oceanic islands in tropical waters (Kohler and Turner 2001, Duncan and Holland 2006, Bessudo et al. 2011, Diemer et al. 2011, Prus 2013).

Both juveniles and adult scalloped hammerhead sharks occur as solitary individuals, pairs, or in schools. Neonate and juvenile aggregations are more common in nearshore nursery habitats, such as Kāne'ohe Bay in Oahu, Hawaii,

coastal waters off Oaxaca, Mexico, Guam's inner Apra Harbor, coastal areas in the Republic of Transkei, and coastal intertidal habitats in Cleveland Bay, Australia (Duncan and Holland 2006, Bejarano-Álvarez et al. 2011, Diemer et al. 2011, Tobin et al. 2013). It has been suggested that neonates and juveniles inhabit these nursery areas for up to or more than a year as they provide valuable refuges from predation (Duncan and Holland 2006, Tobin et al. 2013). In Mauritanian waters, Zeeberg et al. (2006) noted an increase in abundance of hammerhead bycatch in pelagic trawlers during the summer months, with bycatch probability decreasing significantly during the winter and spring, as trade wind-induced upwellings caused sea surface temperatures to drop from summer maximums of 30°C to 18°C.

#### **4.1.4. Impact determination to EFH Species with High Potential Impacts**

Entrainment studies indicate that dredging elicits an avoidance response by demersal and pelagic species and that most juvenile and adult fishes are successful at avoiding entrainment (Larson and Moehl 1990, McGraw and Armstrong 1990). Based on these studies, it is anticipated that most juvenile and adult Gag, summer flounder and scalloped hammerhead shark would be successful at avoiding entrainment in the dredge intake pipe. Dredging at the offshore borrow sites would entrain the planktonic eggs and larvae of Gag and summer flounder that occur in the vicinity of the dredge pipe suction field. According to Van Dolah et al. (1992), estimated rates of larval entrainment at an offshore borrow site in South Carolina were negligible in relation to the fecundity rates and natural larval mortality rates of marine species. As a result of the dredging and placement outside of the 2010 EIS window of December 1 to March 31, the proposed action may result in short-term localized adverse effects. Due to the ability of juvenile and adult fish to move away from the dredge and the negligible rates of larval entrainment, the impacts of the proposed action would not be significant.

#### **4.2. EFH Species with Medium Potential for Impacts**

The species listed in Appendix A with a value of Medium in the 'Impact Potential' column have EFH GIS shapes which spatially overlap the project boundaries, have an observed affinity for sand/sediment resources (Rutecki, et al. 2014), and have observed depth, temporal, and temperature ranges which also overlap the project area. However, these species and life stages are observed to be within the water column, somewhere between a few feet above the seafloor and the surface. Due to their presence in the water column instead of bottom habitats, these species and life stages may experience fewer dredge-related impacts than demersal species.

#### **4.3. EFH Species with Low Potential for Impacts**

The species and life stages listed in Appendix A with a value of Low in the 'Impact Potential' column have EFH GIS shapes which spatially overlap the project boundaries, however, data from fishery management plans and scientific research (Rutecki, et al. 2014) indicate that it is unlikely that those species and life stages will be found within the project area. This determination was made due to one or more of the following factors: they have not been observed to have affinity for using

sand/sediment resources (Rutecki, et al. 2014), they have not been observed within the depth range of the project, they have not been observed within the project area during the season and/or month of the project, or they have not been observed within the anticipated water temperature range of the project. Because these important characteristics do not overlap, these species have the lowest potential of those categorized to be impacted during dredging.

Another group of species with a value of 'Low' in the 'Impact Potential' column of Appendix A are those that are lacking information in fishery management plan documentation with regards to observed depth ranges, seasonality, temperature ranges, or whether the species or life stage is found in the water column or on, near, or within the seafloor substrate. A review of the existing body of scientific literature may reveal more data than what exists in the fishery management plans reviewed in preparation of this document.

#### **4.4. Predicted Relative Abundance or Probability of Presence of Selected Species**

Species distribution models are state-of-the-art statistical models that predict the distribution of species based on species-habitat relationships (Guisan and Zimmermann 2000; Robinson et al. 2011). Distribution models were developed based on fishery-independent survey data from 2004-2017 combined with remote sensing data on oceanographic conditions, substrate, geography, and the surrounding ecosystems of wetlands and estuaries (see Pickens and Taylor 2020 for detailed methods and specific results). Predictive models were assessed with independent validation data, and species distribution models predicted the probability of presence with an accuracy of >70% (range: 73-88% accuracy) as measured by Area Under the Curve (AUC) statistics; these measures show good predictive ability (Manel et al. 2001). We selected species to model based on potential use of sand shoals, socio-economic value, data availability, representation of fish guilds (e.g., demersal species, apex predators). Species modeled include red snapper (adults), black sea bass (juveniles and adults), tiger shark (juveniles and adults), sandbar shark (juveniles and adults), and blacknose shark (juveniles and adults). All models represent spring, summer, and fall seasons. Probability of presence on Borrow Areas A and N are shown in **Tables 3** and **4**. Variables in the models, and their relative influence, are shown in Appendix B.

**Table 3. Probability of presence for selected EFH species in Borrow Area A and the surrounding marine environment. All items reported are mean values.**

Species	Age group(s)	Season	Within Shoal/ Borrow Area	Within 20km	Within Species' Geographic Range within the Region
Blacknose shark	Juveniles and Adults	All	0.25	0.11	0.12
Black sea bass	Juveniles and Adults	All	0.93	0.69	0.6
Red snapper	Adults (years 2+)	All	0	0	0.2
Sandbar shark	Juveniles and Adults	All	0.01	0.01	0.22
Tiger shark	Juveniles and Adults	All	0.53	0.47	0.6

**Table 4. Probability of presence for selected EFH species in Borrow Area N and the surrounding marine environment. All items reported are mean values.**

Species	Age group(s)	Season	Within Shoal/ Borrow Area	Within 20km	Within Species' Geographic Range within the Region
Blacknose shark	Juveniles and Adults	All	0.35	0.16	0.12
Black sea bass	Juveniles and Adults	All	0.75	0.69	0.6
Red snapper	Adults (years 2+)	All	0	0	0.2
Sandbar shark	Juveniles and Adults	All	0.01	0.01	0.22
Tiger shark	Juveniles and Adults	All	0.51	0.47	0.6

#### 4.5. Habitat Areas of Particular Concern (HAPC)

Habitat Areas of Potential Concern (HAPC) are subsets of EFH that have been identified for special consideration during planning due to the rarity of the environment, stressors from development, importance to federally managed species, or vulnerability to anthropogenic degradation (BOEM; NOAA 2018a). HAPCs that overlap the proposed area are listed in **Table 5** and have been considered within this assessment.

**Table 5. List of HAPCs that overlap the project area.**

Site Name	Link
Coastal Inlets	<a href="http://ocean.floridamarine.org/efh_coral/pdfs/Comp_Amend/EFHAmendSect4.0.pdf#page=7">http://ocean.floridamarine.org/efh_coral/pdfs/Comp_Amend/EFHAmendSect4.0.pdf#page=7</a>

#### 4.6. Forage Species for EFH Species

Certain forage species may be important indicators for the presence of EFH species; however, these forage species may not be listed as EFH. For further information on forage species for EFH, see Duval et al. 2016, Okey et al. 2014., CSA International, Inc. et al. 2009, Houde et al. 2014, and Ward Slacum et al. 2011., and South Atlantic Fishery Management Council 2018.

### 5.0 Proposed Mitigation

Measures to minimize or avoid effects on EFH and managed species will be implemented based on consultation with federal agencies. Overarching measures to mitigate impacts are as follows: 1) implementation of best management and engineering practices; and 2) completion of hydrographic surveys pre- and post- dredging. The following Best Management Practices (BMPs) will be utilized for this project to the maximum extent practicable:

#### 5.1. Best Management Practices

Activities will be consistent with those evaluated in all applicable National Environmental Policy Act documents and project permits. The project will comply with all applicable environmental laws. The dredge and any bottom-disturbing equipment will have an onboard global positioning system (GPS). All appropriate Dredging Quality Management and Automatic Identification System (if applicable) data will be submitted to BOEM.

As part of the borrow area use plan, the contractor will recover the maximum amount of beach nourishment material within one portion of a borrow area using a two-foot buffer (i.e. leaving approximately 2 feet of sand on the bottom) before relocating to another portion of the same borrow area or to a separate borrow area. Maximum recovery of material shall be determined by dredging equipment efficiencies, entrainment of unsuitable nourishment material, or the maximum dredging depth determined by the government. Overall, the post-dredging borrow area depressions

would be slightly deeper on average but like the 2010 EIS and will avoid creating deep depressions or pits.

Dredge operators (and any other contractor[s]) will prepare and implement a Marine Pollution Control and Contingency Plan. Pre- and post-dredging bathymetric surveys of the Borrow Areas will be submitted to BOEM.

## **5.2. Mitigation Measures**

Except where noted in Table 13 and 14 of the 2024 GRR/EA and **Tables 6 and 7** below, the proposed action will adhere to the same commitments included in the 2010 EIS. **Table 6** shows the environmental commitments from the 2010 EIS that are applicable to EFH and the status. The commitments include avoidance and minimization measures and monitoring to obtain information on certain species or habitat-specific impacts and should be considered preliminary. Some commitments may be modified pending new information acquired through the review process for 2024 GRR/EA.

Beach placement will be conducted in accordance with the Division of Coastal Management's Consistency Concurrence and the Terms and Conditions of the US Fish and Wildlife's Biological Opinion when received. In addition, dredging will be conducted in accordance with the *2020 South Atlantic Region Biological Opinion for Dredging and Material Placement Activities in the Southeast United States, March 27, 2020* (SARBO) and all applicable project design criteria of the SARBO will be implemented. Previous EFH Consultation (2010) Conservation Recommendations (CRs) and other impact minimization measures have been integrated into the current project plan. These include, but are not limited to:

**Table 6. The 2010 Feasibility/EIS Environmental Commitments with Updates.**

	<b><u>2010 Environmental Commitment</u></b>	<b><u>Status</u></b>
1	Only beach quality sediment (i.e., in accordance with North Carolina Sediment Criteria Rule Language) would be placed on the beach as a component of this project.	<p>A 3/4 inch screen will be used on the beach for all borrow sites. The project would use the Wilmington District compatibility practice-for beach placement material, as outlined in the 2013 EA, that meets these criteria:</p> <p>Less than 10 percent, by weight, material passes #200 sieve over weighted average.</p> <p>Less than 10 percent, by weight, material retained on the #4 sieve over weighted average.</p> <p>Material retained on the 3/4-inch sieve does not exceed, by percentage or size that found on the native beach.</p> <p>Contains no construction debris, toxic material, or other foreign matter.</p> <ul style="list-style-type: none"> <li>• Contains no clasts or lithified rock.</li> </ul>
2	During the PED phase of this project, additional borings or geophysical surveys or both would be performed to better delineate the borrow area boundaries and material types.	Subsurface investigations described in the 2010 FEA/EIS were completed in 2013 to better delineate the borrow area boundaries and material types. Additional borings are being collected to further delineate dredge cut boundaries.
3	If the dredging operations encounter sand deemed non-compatible with native grain size or sorting characteristics of the native beach, the Wilmington District would make the decision on a suitable contingency measure that may include moving the dredge to another site in the borrow area or to another borrow area and would notify the NCDWM and other resource agencies of such a contingency measure.	A 3/4 inch screen will be used on the beach for all borrow sites. If the dredging operations encounter sand that does not meet the sediment requirements described above, the Wilmington District would make the decision on a suitable contingency measure that may include moving the dredge to another site in the borrow area or to another borrow area. The USACE would notify the NCDWM and other resource agencies of such a contingency measure.
4	The USACE would adhere to appropriate environmental windows to the maximum extent practicable.	The proposed action is to eliminate the beach placement window for initial construction, but to abide by the beach placement window for nourishments (November 16 to April 30).



5	All staging areas, pipeline routes, and associated construction activities would avoid high value piping plover and shorebird habitat, located within the vicinity of New River Inlet, to the maximum extent practicable.	No change. Would be implemented as described.
6	The Corps would implement precautionary measures for avoiding impacts to manatees during construction activities as detailed in the <i>Guidelines for Avoiding Impacts to the West Indian Manatee in North Carolina Waters</i> established by the USFWS.	No change. Would be implemented as described.
7	Endangered species observers would be on board all hopper dredges and would record all large whale sightings and note any potential behavioral effects. The USACE and the contractor would keep the date, time, and approximate location of all marine mammal sightings. They would take care not to closely approach (within 300 feet) any whales, manatees, or other marine mammals during dredging operations or transport of dredged material. An observer would serve as a lookout to alert the dredge operator or vessel pilot or occurrence of such animals. If any marine mammals are observed during other dredging operations, including vessel movements and transit to the dredged material disposal site, collisions would be avoided either through reduced vessel speed, course alteration, or both.	Changed to adhere to updated Project Design Criteria (PDC)s outlined in the South Atlantic Regional Biological Opinion for Dredging and Material Placement Activities in the Southeast United States (SARBO).
8	The USACE would strictly adhere to all conditions outlined in the most current NMFS Regional Biological Opinion (RBO) for dredging of channels and borrow areas in the southeastern United States. Furthermore, as a component of	The 2020 SARBO supersedes previous RBO. The proposed action is to eliminate the environmental window for initial construction and to accomplish all nourishments during the beach placement window of November 16 to April 30. No other changes are proposed.

	<p>this project, hopper dredging activities for both initial construction and each nourishment interval would adhere, to the maximum extent practicable, to a dredging window of December 1 to March 31. Turtle-deflecting dragheads, inflow or overflow screening, or both would be used, and NMFS-certified turtle and whale observers would also be implemented.</p>	
9	<p>To determine the potential taking of whales, turtles, and other species by hopper dredges, NMFS-certified observers would be on board during all hopper dredging activities. Recording and reporting procedures would be followed in accordance with the conditions of the current NMFS RBO.</p>	No change. Would be implemented as described.
10	<p>The Corps would avoid the sea turtle nesting season during initial construction and each nourishment interval. If, because of unforeseen circumstances, construction extends into the nesting season, the Corps would implement a sea turtle nest monitoring and avoidance/relocation plan through coordination with USFWS and NCWRC.</p>	<p>The proposed action is to accomplish initial construction any time of year (no environmental window) and to accomplish all nourishments within the beach placement window of November 16 to April 30. A new USFWS BO was received on December 3, 2024, resulting in no changes to this commitment (<b>Appendix M</b>). USACE would implement a sea turtle nest monitoring plan as noted for any work within the sea turtle nesting season.</p>
11	<p>Sea turtle nesting monitoring activities in beach nourishment areas would be required to assess post-nourishment nesting activity including daily surveys beginning at sunrise from May 1 until September 15. Information on false crawl location, nest location, and hatching success of all nests would be recorded and provided to NCWRC.</p>	<p>A new USFWS BO was received on December 3, 2024, resulting in no changes to this commitment (<b>Appendix M</b>).</p>
12	<p>The beach would be monitored for escarpment formation by the contractor before completion of beach construction activities associated with initial construction</p>	<p>A new USFWS BO was received on December 3, 2024, resulting in no changes to this commitment (<b>Appendix M</b>).</p>

	<p>and each nourishment interval. Additionally, the local sponsor would monitor the beach for escarpment formation before each turtle nesting season every year between nourishment events. Escarpments that exceed 18 inches in height for a 100 feet distance would be leveled by the contractor or the local sponsor accordingly. If it is determined that escarpment leveling is required during the nesting or hatching season, leveling actions should be directed by the USFWS.</p>	
13	<p>Only beach-compatible sediment would be placed on the beach as a component of the project. The USACE would, in coordination with the NCWRC and USFWS, evaluate post-nourishment beach compaction (hardness) using qualitative assessment techniques to assure that impacts to nesting and incubating sea turtles are minimized and, if necessary, identify appropriate mitigation responses.</p>	<p>A new USFWS BO was received on December 3, 2024, resulting in no changes to this commitment (Appendix M).</p>
14	<p>Local lighting ordinances would be encouraged to the maximum extent practicable to reduce lighting impacts to nesting females and hatchlings. The local sponsors would be encouraged to work with the USFWS, local monitoring groups, and other concerned organizations to develop the best plan for Surf City.</p>	<p>A new USFWS BO was received on December 3, 2024, resulting in no changes to this commitment <b>(Appendix M)</b>.</p>
15	<p>Throughout the duration of each nourishment event, both initial construction and periodic nourishment, the contractor would be required to monitor for the presence of stranded sea turtles, live or dead. If a stranded sea turtle is identified, the contractor would immediately notify the NCWRC of the stranding and implement the appropriate measures, as directed by the</p>	<p>A new USFWS BO was received on December 3, 2024, resulting in no changes to this commitment <b>(Appendix M)</b>.</p>

	NCWRC. Construction activities would be modified appropriately as not to interfere with stranded animals, live or dead.	
16	To better understand the threshold of sediment color change and resultant heat conduction from nourishment on temperature-dependent sex determination of sea turtles, the USACE would monitor nest temperatures in the project area during the nesting season following initial construction. That data would be compared to non-nourished native sediment temperatures to support development of management criteria for sediment color guidelines.	Coordination with the USFWS, NCDCM and NCWRC has resulted in this commitment being dropped July 21, 2020 ( <b>Appendix M</b> ).
17	To assess the abundance of sea turtles, and potential risk of hopper dredge take within the proposed borrow areas for the project, the USACE would participate in the NCWRC's current satellite telemetry efforts to track the distribution and habitat usage of sea turtles in North Carolina offshore waters.	Coordination with the USFWS, NCDCM and NCWRC has resulted in this commitment being dropped July 21, 2020 ( <b>Appendix M</b> ).
18	Monitoring for seabeach amaranth on Surf City would be implemented in the growing season following initial construction to assess the post-nourishment presence of plants. The survey would be broken down into survey reaches for each town in accordance with the designated Corps' sea beach amaranth survey reaches from 1991 to 2008 to maintain consistent data and survey techniques over time, and results would be provided to USFWS.	A new USFWS BO was received on December 3, 2024, resulting in no changes to this commitment ( <b>Appendix M</b> ).

19	The anticipated construction timeframe for initial and periodic nourishment events would avoid peak recruitment and time for surf zone fishes and benthic invertebrates.	The proposed action would minimize impacts to surf zone fishes and benthic invertebrates to the maximum extent practicable, but initial construction is proposed to occur any time of year to reduce the number of disturbance events.
20	Before initiating any land disturbing activities related to the initial construction period, the USACE would develop a Monitoring Plan, in coordination with the resource agencies, to assess project impacts on fisheries and fish prey habitat that outlines: (1) the methodologies for evaluating for hardbottom and intertidal beach habitat impacts, (2) the criteria for determining whether significant, adverse impacts to these habitats have occurred, and (3) implementation of the monitoring plan. Though unlikely, based on the avoidance measures incorporated in the study design, should the Monitoring Plan document that a significant adverse impact to habitat has occurred, a Mitigation Plan would be developed outlining the appropriate actions that would be implemented in cooperation with state and federal agencies to rectify the adverse impacts to a level of insignificance.	The USACE has coordinated with the NMFS and developed a plan to monitor for any potential effects the dredging may have on the benthic infauna and epifauna in the borrow areas as outlined in <b>Appendix L</b> .
21	Initial construction would be completed over the course of four construction stages, each stage entailing a full constructed template.	The proposed action is to construct the project in one 16-month long phase, avoiding multiple disturbance events.
22	To (1) ensure that required buffer distances are adhered to, (2) avoid physical impacts to hardbottom resources, and (3) monitor the potential for leakage of sediment, the USACE would require all dredges to implement the Silent Inspector automated dredge plant monitoring system.	No change. Would be implemented as described. The Silent Inspector automated dredge plant monitoring system has been replaced with the National Dredging Quality Management (DQM) Program which is a Corps of Engineers-dredging industry partnership for automated dredging monitoring of Corps dredging projects.

23	<p>Considering the ephemeral nature of the low- relief hardbottom features in the nearshore environment and the potential for low-lying outcrops to occur in the pipeline corridor distance requirements and associated dredge and pipeline anchor points, the USACE intends to survey all areas associated with potential pump-out and pipeline corridor requirements before construction to avoid potential impacts to hardbottom features. All information associated with the surveys, data analysis, identification and mapping of pipeline corridors, appropriate buffers, and such, and subsequent measures developed to avoid resource impacts would be coordinated with the resource agencies before construction.</p>	No change. Would be implemented as described.
24	<p>If a physical impact by the hopper dredge drag heads to previously unexposed hard- bottom occurs, the incident would be thoroughly documented and coordinated with the appropriate state and federal resource agencies. Based on the outcome of such coordination, appropriate action would be taken to investigate and mitigate potential effects.</p>	No change. Would be implemented as described.

25	<p>Project monitoring of sedimentation effects from dredging activities in the proposed 122-meter (400-foot) buffer would be implemented when appropriate. Sediment monitoring at select offshore transects, including controls, would occur before, during, and, if necessary, after construction and would include installing sediment traps (collectors) and in-situ sediment depth measurements. If sediment accumulation at the compliance transects is &gt; 10 percent of the sediment accumulated on average per day at the three control sites, the USACE would direct the contractor to stop dredging operations within the 122-meter (400-foot) buffer and move to another area 500-meter (1,640-feet) from the identified hardbottom sites.</p>	<p>The USACE has coordinated with the NMFS to obtain input to develop a plan to monitor sedimentation effects from dredging activities (sediment resuspension and potential deposition on hardbottom habitat) within the 122-meter (400-foot) hardbottom buffer as outlined in <b>Appendix L</b>.</p>
26	<p>The USACE would contact the North Carolina Shellfish Sanitation and Recreational Water Quality Section before start of work, so the project area may be posted as required.</p>	<p>No change. Would be implemented as described.</p>
27	<p>Before initiating any land-disturbing activities, the USACE would obtain the approval of the North Carolina Division of Land Resources of an erosion and sedimentation control plan. The USACE would comply with the requirements of the approved erosion and sedimentation control plan. A copy of the plan approval would be forwarded to NCDWM.</p>	<p>No change. Would be implemented as described.</p>
28	<p>Before construction, the USACE would obtain a Section 401 Water Quality Certification from the NCDWQ for the proposed project. The Corps would comply with the requirements of the Section 401 Water Quality Certification. A copy of the certification would be forwarded to NCDWM.</p>	<p>No change. Will be implemented as described.</p>

29	Temporary dikes would be used to retain and direct flow of material parallel to the shoreline to minimize surf zone turbidities. The temporary dikes would be removed and the beach graded in accordance with approved profiles on completion of pumping activities in that section of beach.	No change. Would be implemented as described.
30	Land-based equipment necessary for beach nourishment work would be brought to the site through existing accesses. If the work results in any damage to existing accesses, the accesses would be restored to pre-project conditions immediately on project completion.	No change. Would be implemented as described.
31	Dune disturbance would be kept to a minimum. Any alteration of existing dunes would be coordinated with NCDQM and the appropriate property owner(s). All disturbed areas would be restored to original contours and configuration with reference to the surveyed normal high-water line and would be revegetated immediately after project completion in that area.	No change. Would be implemented as described.
32	To prevent leakage, dredge pipes would be routinely inspected. If leakage is found and repairs cannot be made immediately, pumping of material must stop until such leaks are fixed.	No change. Would be implemented as described.
33	Before construction the existing MHW line would be surveyed and a copy provided to the NCDQM. If construction is not initiated within 60 days or there is a major shoreline change before beginning beach nourishment (or both), a new survey would be conducted.	No change. Would be implemented as described.



34	Before initiating any beach nourishment activity, the USACE would coordinate with NCDCM to determine the static vegetation line to be used as the reference point for measuring future oceanfront setbacks. That static vegetation line would then be marked, and a survey depicting the static vegetation line would be submitted to NCDCM before any beach nourishment activities.	No change. Would be implemented as described.
35	After the post-construction beach profile surveys are completed, the USACE would coordinate with the North Carolina Floodplain Mapping Program to support revisions to the Digital Flood Insurance Rate Maps (DFIRMs). As part of such coordination, the Corps would provide a Letter of Map Revision.	No change. Would be implemented as described.
36	No sand would be placed on any sandbags that have been determined by NCDCM to be subject to removal under 15A NCAC 07H.0308(a)(2). To ensure compliance with that condition, NCDCM would be contacted before project initiation so that NCDCM staff may meet on-site with the USACE or the contractor or both.	No change. Would be implemented as described.
37	To mitigate the very remote chance of encountering ordnance, the beach would be inspected daily, and any ordnance discovered would be handled in accordance with the Military Munitions Rule, Title 40 of the <i>Code of Federal Regulations</i> (CFR) Parts 260-270. The Marine Corps Base Explosive Ordnance Disposal Team would be available (on call) during the dredging process. Additionally, the contract specifications for the proposed project would direct the contractor to immediately stop dredging or disposal. Additional measures would	<p>Changed to the following:</p> <p>Use of standard metal screens on hopper dredges for all borrow sites per the SARBO</p> <p>Use of ¾ inch metal screens on the beach for all borrow sites per the CENAB probability assessment</p> <p>A UXO technician 3 will be on-site any time the ¾ inch metal screen is implemented for MEC determination on the beach.</p> <p>Sand for initial construction and periodic nourishments will first be taken from Borrow Area A, which is well outside of the Camp Davis anti-aircraft firing range, and proceed in northeastward direction to portions of borrow sites outside of the known limits of the firing range.</p>

	then be implemented, as necessary, including inspection of dredged material on the beach and installing outflow screens on the dredge pipeline. Any unexploded ordnance found on the beach would be promptly removed.	This strategy will adjust as the presence of MEC within the project borrow areas is better understood.
38	To assure the risk of potential impacts to cultural resources within inshore areas subject to pump-out activities are avoided, specific pump-out locations would identify, survey, and investigate for cultural resources in conjunction with hardbottom surveys before beginning nourishment activities.	No change. Would be implemented as described.
39	If, during dredging activities, any previously unidentified or unanticipated historical, archaeological, and cultural resources are discovered in the inflow screening of the dredge or in the beach placement area, all activities that could damage or alter such resources would be suspended. If such a discovery or find is made, the USACE Contracting Officer would be immediately notified so that the appropriate authorities, including the BOEM, may be notified in accordance with USACE policy and 30 CFR 250.194(c) and a determination made as to their significance and what, if any, special disposition of the finds should be made.	No change. Would be implemented as described.

**Table 7. Additional Environmental Commitments.**

1.	Depending on regional incidental sea turtle take numbers at the time of operations and the potential of project specific take, relocation trawling may be required as a component of offshore borrow hopper dredging operations.
2.	The contractor would be required to maintain a minimum of one dredge diligently working until the nourishment is completed.
3.	As part of the borrow area use plan, the contractor would recover the maximum amount of beach quality sand within one portion of the borrow area using a two-foot buffer (i.e., leaving approximately two feet of beach quality sand on the bottom) before relocating to another area within the borrow area. The contractor would be allowed to disturb this two-foot buffer to comply with SARBO PDCs to minimize entrainment impacts but is not allowed to dredge material from the 2 foot-buffer. Maximum recovery of material shall be determined by dredging equipment efficiencies, entrainment of unsuitable material, or the maximum dredging depth determined by the government, whichever depth is less.
4.	If the dredge encounters a pocket of material that contains incompatible material such as rock or clay balls, the contractor would stop dredging in that area and move the dredge within the approved borrow area. Mechanical raking of the beachfill area during/after beachfill placement (i.e., Using a front-end loader, bobcat type, or similar mechanical equipment outfitted with a specialized bucket containing a rake and screen with screen opening size no larger than 2"X2") would be a contractual option that would be exercised if needed. Screening at the draghead or on the beach may also be a contractual option if needed.
5.	All locations identified as acceptable alternatives for beach access for pipeline, pipe staging areas, location of pipeline routes, and offshore anchoring would be surveyed by the dredging company contracted to complete the project and coordinated with the OSA/SHPO prior to implementation of the proposed action.
6.	The dredge would avoid areas of known debris in the borrow area and cease operations and move away from an area if large amounts of debris are found. Records would be kept regarding when the debris containers are emptied. A map showing areas dredged and relative amounts of debris would be developed and distributed to the Service, NCDQM and other agencies weekly.
7.	All work that may generate turbidity will be completed in a way that minimizes the risk of turbidity and sedimentation reaching non-mobile ESA-listed species to the maximum extent practicable. This may include selecting equipment types that minimize turbidity and positioning equipment away or downstream of non-mobile species.

## **6.0 Conclusion and Agency Review**

The severity of the impact to EFH and supported species is dictated by: 1) the spatial extent of the impact and 2) the chronic or long-term nature of the impact. A review of international literature has shown heightened levels of turbidity regularly occur within 3 km (or 1.86 miles) of dredging sites; turbidity, as a direct result of dredging, often settles within minutes to hours, but long-term monitoring of dredged sites has also shown resuspension of sediments occurs up to 1 ½ years after the dredging event (Pickens and Taylor 2020). Mortality of fish from turbidity is unlikely, but avoidance of the area by fish is a strong possibility (Pickens and Taylor 2020). Underwater sounds and fish entrainment are more local effects that occur over short time periods during the dredging event itself.

The areas that have been designated as EFH in the project area have been given this classification because they are believed to be “those waters and substrate necessary to fish for spawning, breeding, feeding, or growth to maturity” (16 U. S. C. 1802). HAPC, a separate designation within EFH, is based on one or more of the following considerations: 1) the importance of the ecological function, 2) extent to which the habitat is sensitive to human-induced degradation, 3) whether and to what extent development activities are stressing the habitat type, or 4) rarity of habitat type [50 CFR 600.815(a)(8)].

As discussed and evaluated in this assessment, offshore dredging, dredge transit, and placement along the shoreline are not expected to impact “those waters and substrate necessary to fish for spawning, breeding, feeding, or growth to maturity” to any appreciable extent over a significantly large area or over any significant period. Impacts would be limited and short-term. From a finfish perspective, demersal species, early life stages (i.e., eggs, larvae), dormant life stages, spawning individuals, and habitats that are important for species’ migration are predicted to most impacted (Pickens and Taylor 2020). Other pelagic species and life stages are predicted to be minimally impacted. Given the relatively small size of the impacted area relative to the large geographic ranges of transitory fishes, the proposed activities are likely to have only minor impacts on the populations of finfish evaluated in this analysis.

Accordingly, it has been determined that the project may have adverse effects on EFH for Federally managed species, but adverse effects on EFH species, due to construction, will largely be temporary and localized within the dredged footprints and beach nourishment areas in the surf zone. In conclusion, the project is not anticipated to significantly impact EFH species or habitat that may be in the project area.

## 7.0 References

- Able, K.W. and S.C. Kaiser. 1994. Synthesis of Summer Flounder habitat parameters. NOAA Coastal Ocean Program, Decision Analysis Series 1. NOAA Coastal Ocean Office, Silver Spring, MD. 68 p.
- Able, K.W. and M.P. Fahay. 1998. The first year in the life of estuarine fishes in the Middle Atlantic Bight. Rutgers University Press. New Brunswick, NJ. 342 p.
- Able, K.W., M.C. Sullivan, J.A. Hare, G. Bath-Martin, J.C. Taylor, and R. Hagan. 2010. Larval abundance of Summer Flounder (*Paralichthys dentatus*) as a measure of recruitment and stock status. Fishery Bulletin, 109:68–78.
- Able, K.W. and M.P. Fahay. 2010. Ecology of estuarine fishes: Temperate waters of the western North Atlantic. Johns Hopkins University Press, Baltimore, Maryland.
- Adamski, K.M. 2009. Developing an index of abundance for Gag grouper (*Mycteroperca microlepis*) in North Carolina. MS Thesis. North Carolina State University, Raleigh, NC. 77 p.
- Adamski, K.M., J.A. Buckel, G.B. Martin, D.W. Ahrenholz, and J.A. Hare. 2012. Fertilization dates, pelagic larval durations, and growth in gag (*Mycteroperca microlepis*)

from North Carolina, USA. Bulletin in Marine Science, 88(4):971-986. Murdy and Musick 2013.

Anderson, W.W. and J.W. Gehringer. 1965. Biological statistical census of the species entering fisheries in the Cape Canaveral area. U.S. Fish and Wildlife Service Special Science Report Fisheries, 514. 79 p.

Appleby J, Scarratt DJ. Physical effects of suspended solids on marine and estuarine fish and shellfish with special reference to ocean dumping: A literature review. 1989.

Atlantic States Marine Fisheries Commission (ASMFC). 2015. Summer Flounder (*Paralichthys dentatus*). Available at: <http://www.asmfc.org/species/summer-flounder>

Bearden, C.M. and C.H. Farmer, III. 1972. Fishery resources of Port Royal Sound estuary. IN: M. Thompson (ed.) Port Royal Sound Environmental Study. South Carolina Water Resources Commission.

Bejarano-Álvarez, M., Galván-Magaña, F. and Rosa Isabel Ochoa-Báez. 2011. Reproductive biology of the scalloped hammerhead shark *Sphyrna lewini* (Chondrichthyes: Sphyrnidae) off south-west Mexico. Aqua 17: 11–22.

Bessudo, S., Soler, G.A., Klimley, A.P., Ketchum, J.T., Hearn, A. and R. Arauz. 2011. Residency of the scalloped hammerhead shark (*Sphyrna lewini*) at Malpelo Island and evidence of migration to other islands in the Eastern Tropical Pacific. Environmental Biology of Fishes 91: 165–176.

Bigelow H.B. and W.C. Schroeder. 1953. Fishes of the Gulf of Maine. U.S. Fish and Wildlife Service Fishery Bulletin, 53:577

Bisbal, G.A. and D.A. Bengtson. 1995. Description of the starving condition in Summer Flounder, *Paralichthys dentatus*, early life history stages. Fishery Bulletin, 93:217-230.

BOEM. Essential Fish Habitat. <https://www.boem.gov/Essential-Fish-Habitat/>. BOEM. Accessed 19 October 2018.

Briggs, J.C. 1958. A list of Florida fishes and their distribution. Bulletin Florida State Museum of Biological Science, 2:223-318.

Brown, C.A. 2002. The transport of fish larvae to estuarine nursery areas: a modeling study. Dissertation Abstracts International Part B: Science and Engineering, 62(7):3099.

Burke, J.S., M. Ueno, Y. Tanaka, H. Walsh, T. Maeda, I. Kinoshita, T. Seikai, D.E. Hoss, and M. Tanaka. 1998. The influence of environmental factors on early life history patterns of flounder. Journal of Sea Research, 40:19-32.

Burns, R.W. 1974. Species abundance and diversity of larval fishes in a high-marsh tidal creek. MS Thesis, University of South Carolina, Columbia, SC. 63 p.

Capossela, K.M. 2010. Migration dynamics, within-estuary behaviors and cardiorespiratory responses of Summer Flounder to selected estuarine conditions. MS Thesis. The College of William of Mary, Williamsburg, VA. 115 p.

Cleary, W.J. 2003. *An Assessment of the Availability of Beachfill Quality Sand Offshore North Topsail Beach and Surf City North Carolina*. HDR Engineering, Inc., of the Carolinas, Sunset Beach, NC.

Collins, M.R., C.W. Waltz, W.A. Roumillat, and D.L. Stubbs. 1987. Contribution to the life history and reproductive biology of gag, *Mycteroperca microlepis* (Serranidae) in the South Atlantic Bight. Fishery Bulletin, 85(3):648-653.

CSA International, Inc., Applied Coastal Research and Engineering, Inc., Barry A. Vittor Associates, Inc., C.F. Bean, L.L.C., and Florida Institute of Technology. Analysis of Potential Biological and Physical Impacts of Dredging on Offshore Ridge and Shoal Features. Prepared by CSA International, Inc. in cooperation with Applied Coastal Research and Engineering, Inc., Barry A. Vittor Associates, Inc., C.F. Bean, L.L.C., and the Florida Institute of Technology for the U.S. Department of the Interior, Minerals Management Service, Leasing Division, Marine Minerals Branch, Herndon, VA. OCS Study MMS 2010-010. 2009. 160 pp. + apps.

Desfosse, J.C. 1995. Movements and ecology of Summer Flounder, *Paralichthys dentatus*, tagged in the southern Mid-Atlantic Bight. PhD Dissertation, College of William and Mary, Williamsburg, VA. 187 p.

Deubler, E.E., Jr. 1958. A comparative study of postlarvae of three flounders (*Paralichthys*) in North Carolina. Copeia, 1958(2):112-116.

Diemer, K.M., Mann, B.Q. and N.E. Hussey. 2011. Distribution and movement of scalloped hammerhead *Sphyrna lewini* and smooth hammerhead *Sphyrna zygaena* sharks along the east coast of southern Africa. African Journal of Marine Science 33: 229-238.

Duncan, K.M. and K.N. Holland. 2006. Habitat use, growth rates and dispersal patterns of juvenile scalloped hammerhead sharks *Sphyrna lewini* in a nursery habitat. Marine Ecology Progress Series 312: 211–221.

Duval, M., Phillips, C., and Waugh, G.T. Policy Considerations for South Atlantic Food Webs and Connectivity and Essential Fish Habitats. South Atlantic Fishery Management Council. 2016. 9 p.

Erftemeijer PL, Riegl B, Hoeksema BW, Todd PA. Environmental impacts of dredging and other sediment disturbances on corals: a review. Marine pollution bulletin 2012;64(9):1737-1765.

Fisher R, Stark C, Ridd P, Jones R. Spatial patterns in water quality changes during dredging in tropical environments. PloS one 2015;10(12):e0143309.

Fogarty, M.J. 1981. Review and assessment of the Summer Flounder (*Paralichthys dentatus*) fishery in the northwest Atlantic. U.S. National Marine Fisheries Service Northeast Fisheries Science Center. Woods Hole Lab Ref. Doc. No. 81-25. 54 p.

Gilbert, C.R. 1986. Species profiles: Life histories and environmental requirements of coastal fishes and invertebrates (south Florida): Southern, gulf, and summer flounders. U.S. Fish and Wildlife Service Biological Report, 82(11.54). 24 p.

Ginsburg, I. 1952. Flounders of the genus *Paralichthys* and related genera in American waters. U.S. Fish and Wildlife Service Fishery Bulletin, 52:267-351.

GMFMC and NOAA. Final Report 5-Year Review of Essential Fish Habitat Requirements Including Review of Habitat Areas of Particular Concern and Adverse Effects of Fishing and Non-Fishing in the Fishery Management Plans of the Gulf of Mexico. 2016. [http://gulfcouncil.org/wp-content/uploads/EFH-5-Year-Review-plus-App-A-and-B\\_Final\\_12-2016.pdf](http://gulfcouncil.org/wp-content/uploads/EFH-5-Year-Review-plus-App-A-and-B_Final_12-2016.pdf)

Grimes, B.H., M.T. Huish, J.H. Kerby, and D. Moran. 1989. Species profiles: Life histories and environmental requirements of coastal fishes and invertebrates (Mid-Atlantic): Summer and winter flounder. U.S. Fish and Wildlife Service Biological Report, 82(11.112). 18 p.

Grosslein, M.D. and T.R. Azarovitz. 1982. Fish distribution. MESA New York Bight Atlas Monograph 15, N.Y. Sea Grant Inst., Albany, N.Y. 182 p.

Guisan A, Zimmermann NE. Predictive habitat distribution models in ecology. Ecological modelling 2000;135(2-3):147-186.

Guthertz, E.J. 1967. Field guide to the flatfishes of the family Bothidae in the western North Atlantic. U.S. Fish and Wildlife Service Circular, 263. 47 p.

Hardy, J.E., Jr. 1978. Development of fishes of the Mid-Atlantic Bight – an atlas of egg, larval, and juvenile stages, vol III. Aphredoderidae through Rachycentridae. U.S. Fish and Wildlife Service, U.S. Department of Interior, 394 p.

Havis RN. Environmental Effects of Dredging: Sediment Resuspension by Selected Dredges. ARMY ENGINEER WATERWAYS EXPERIMENT STATION VICKSBURG MS ENVIRONMENTAL LAB; 1988.

Heemstra, P.C., W.D. Anderson Jr., and P.S. Lobel. 2002. Serranidae. In: Carpenter, K.E. (ed.) The living marine resources of the western central Atlantic. Volume 2. Bony fishes part 1 (Ascipenseridae to Grammatidae). FAO Species Identification Guide for Fishery Purposes, American Society of Ichthyologists and Herpetologist Special Publication 5. Rome. pp. 1308-1369.

Henderson-Arzapalo, A., R.L. Colura, and A.F. Maciorowski. 1988. Temperature and photoperiod induced maturation of Southern Flounder. Texas Parks Wildlife Department, Management Data Series. No. 154, 21 p.

Hildebrand, S.F. and W.C. Schroeder. 1928. Fishes of Chesapeake Bay. Bulletin of U.S. Bureau of Fisheries, 43(1), 366 p.

Houde, E., Gaichas, S., and Seagraves, R. Managing Forage Fishes in the Mid-Atlantic Region, A White Paper to Inform the Mid-Atlantic Fishery Management Council. Mid-Atlantic Fishery Management Council. 2014. 30 p.

Keefe, M. and K.W. Able. 1993. Patterns of metamorphosis in Summer Flounder, *Paralichthys dentatus*. Journal of Fish Biology, 42:713-728.

Keefe, M. and K.W. Able. 1994. Contributions of biotic factors to settlement in Summer Flounder, *Paralichthys dentatus*. Copeia, 1994(2):458-465.

Keener, P., G.D. Johnson, B.W. Stender, E.B. Brothers, and H.R. Beatty. 1988. Ingress of postlarval Gag, *Mycteroperca microlepis* (Pisces: Serranidae), through a South Carolina barrier island inlet. Bulletin of Marine Science, 42:376-396.

Kim TG, Grigalunas TA, Han K-N. The economic costs to fisheries because of marine sand mining in Ongjin Korea: Concepts, methods, and illustrative results. Ecological Economics 2008;65(3):498-507.

Kjelland ME, Woodley CM, Swannack TM, Smith DL. A review of the potential effects of suspended sediment on fishes: potential dredging-related physiological, behavioral, and transgenerational implications. Environment Systems and Decisions 2015;35(3):334-350.

Klein-MacPhee, G. 2002. Summer Flounder (*Paralichthys dentatus*, Linnaeus 1766). In: Collette, B.B., Klein-MacPhee, G. (Eds.), Bigelow and Schroeder's Fishes of the Gulf of Maine, third ed. Smithsonian Institution Press, Washington, DC, pp. 554-559.

Koenig, C.C. and F.C. Coleman. 1998. Recruitment forecasting based on juvenile abundance in the seagrass beds of the west coast of Florida. MARFIN final report.

Larson, K. and C. Moehl. 1990. Fish entrainment by dredges in Grays Harbor, Washington. In: Effects of dredging on anadromous Pacific Coast fishes. C. A. Simenstad, ed., Washington Sea Grant Program, University of Washington, Seattle, 102-12.

Lindeman KC and Snyder DB. Nearshore hardbottom fishes of southeast Florida and effects of habitat burial caused by dredging. Fishery Bulletin 1999;97(3):508-525.

Maguire, J.J., Sissenwine, M.P., Csirke, J., Grainger, R.J.R. and S.M. Garcia. 2006. The state of world highly migratory, straddling and other high seas fisheries resources and associated species. FAO Fisheries Technical Paper. No. 495. FAO, Rome. 84p.

Kohler, N.E. and P.A. Turner. 2001. Shark tagging: a review of conventional methods and studies. Environmental Biology of Fishes 60: 191-223.



Manel S, Williams HC, Ormerod SJ. Evaluating presence-absence models in ecology: the need to account for prevalence. *Journal of applied Ecology* 2001;38(5):921-931.

Marine Resources Monitoring, Assessment and Prediction (MARMAP) Program. 1998. SEDAR10-DW-05: Description of MARMAP Sampling. 15 p. Available at: <http://sedarweb.org/docs/wpapers/S10DW05%20Atl%20Fishind%20sam.pdf>

McGovern, J.C., D.M. Wyanski, O. Pashuk, C.S. Manooch, and G.R. Sedberry. 1998. Changes in the sex ratio and size at maturity of gag, *Mycteroperca microlepis*, from the Atlantic coast of the southeastern United States during 1976-1995. *Fishery Bulletin*, 96(4):797-807.

McGraw, K.A. and D.A. Armstrong. 1990. Fish Entrainment by Dredges in Grays Harbor, Washington. pp. 113-131. In: C.A. Simenstad (ed.). *Effects of Dredging on Anadromous Pacific Coast Fishes*. Workshop Proceedings, University of Washington Sea Grant, FL.

Michel J, Bejarano AC, Peterson CH, Voss C. Review of biological and biophysical impacts from dredging and handling of offshore sand. Herndon, VA.: U.S. Department of the Interior, Bureau of Ocean Energy Management, OCS Study BOEM 2013- 0119.; 2013 2013. 258 p.

Miller, G.L. and S.C. Jorgenson. 1969. Seasonal abundance and length frequency distributions of some marine fishes in coastal Georgia. U.S. Fish and Wildlife Service Data Report 35. Washington, DC. 102 p.

Miller, M.H., Carlson, J., Cooper, P., Kobayashi, D., Nammack, M., and J. Wilson. 2014. Status review report: scalloped hammerhead shark (*Sphyrna lewini*). Final Report to National Marine Fisheries Service, Office of Protected Resources. March 2014. 133 pp.

Monaghan, J.P., Jr. 1996. Life history aspects of selected marine recreational fishes in North Carolina. Study 2. Migration of parichthid flounders tagged in North Carolina. Completion Rep. Grant F-43. North Carolina Department of Environment, Health, and Natural Resources, Division of Marine Fisheries. Morehead City, NC. 44 p.

Moser, M.L. and T.B. Taylor. 1995. Hard bottom habitat in North Carolina state waters: A survey of available data, Final Report of the Center for Marine Science Research to the North Carolina Division of Coastal Management, Ocean Resources Taskforce, Raleigh, North Carolina.

Mullaney, M.D., Jr. 1994. Ontogenetic shifts in the diet of gag, *Mycteroperca microlepis*, (Goode and Bean) (Pisces: Serranidae). *Proceedings of the Gulf and Caribbean Fisheries Institute*, 43:432-445.

Mullaney, M.D. and L.D. Gale. 1996. Ecomorphological relationships in otogeny: Anatomy and diet in gag, *Mycteroperca microlepis*. *Copeia*, 1996:167-180.

NMFS, South Atlantic Regional Biological Opinion for Dredging and Material Placement Activities in the Southeast United States. 2020

National Oceanic and Atmospheric Administration (NOAA). 2014. Fishwatch U.S. Seafood Facts: Gag Grouper. Available at: <https://www.fishwatch.gov/profiles/gag-grouper>

NOAA, 2018. Habitat Areas of Particular Concern with Essential Fish Habitat. NOAA. <https://www.fisheries.noaa.gov/news/habitat-areas-particular-concern-within-essential-fish-habitat>. 26 July 2018a. Accessed 19 October 2018.

NOAA, 2018b. Ocean Reporting Tool. NOAA, BOEM. <https://coast.noaa.gov/digitalcoast/tools/ort.html>. 2018b. Accessed 19 October 2018.

Noble, E.B. and R.J. Monroe. 1991. Classification of Pamlico Sound nursery areas: recommendations for critical habitat criteria. North Carolina Department of Environment, Health, and Natural Resources, A/P Project No. 89-09, Morehead City, NC. 90 p.

North Carolina Department of Environment and Natural Resources (NCDENR). 2018. Gag *Mycteroperca microlepis* Overview. Available at: <http://portal.ncdenr.org/web/mf/gag-grouper>

Okey, T.A., Cisneros-Montemayor, A.M., Pugliese, R., and Sumaila, U.R. Exploring the Trophodynamic Signatures of Forage Species in the U.S. South Atlantic Bight Ecosystem to Maximize System-Wide Values. Fisheries Centre, University of British Columbia, Vancouver, BC, V6T 1Z4, Canada. 2014. 79 p.

Packer, D.B., S.J. Griesbach, P.L. Berrien, C.A. Zetlin, D.L. Johnson, and W.W. Morse. 1999. *Essential Fish Habitat Source Document: Summer Flounder, *Paralichthys dentatus**, Life History and Habitat Characteristics. NOAA Technical Memorandum NMFS-NE-151. National Marine Fishery Service, Highlands, NJ. 98 p.

Peters, D.S., L.R. Settle, and J.D. Fuss. 1995. Larval fish abundance in the vicinity of Beaufort Inlet prior to berm construction. NMFS, Beaufort, NC.

Peterson, M.S., B.H. Comyns, J.R. Hendon, P.J. Bond, and G.A. Duff. 2000. Habitat use by early life history stages of fishes and crustaceans along a changing estuarine landscape: Differences between natural and altered shoreline sites. *Wetlands Ecology and Management*, 8(2-3):209-219.

Peters, D.S. and L.R. Settle. 1994. Larval fish abundance in vicinity of Beaufort Inlet prior to berm construction. NMFS data summary report of project funded by the U.S. Army Corps of Engineers: 38.

PIANC. Dredging and port construction around coral reefs. The World Association for Waterborne Transport Infrastructure (PIANC), Report 108; 2010. 75 p.

Pickens BA, Taylor JC (eds.). 2020. Regional Essential Fish Habitat Geospatial Assessment and Framework for Offshore Sand Features. Sterling (VA): US Department of the Interior, Bureau of Ocean Energy Management. OCS Study BOEM 2019-xxx, NCCOS Technical Memorandum XX-XXX. xx p.

Poole, J.C. 1961. Age and growth of the fluke in Great South Bay and their significance to the sport fishery. N.Y. Fish Game Journal, 8:1-18.

Poole, J.C. 1966. A review of research concerning Summer Flounder and needs for further study. N.Y. Fish Game Journal, 13:226-231.

Powell, A.B. and T. Henley. 1995. Egg and larval development of laboratory-reared gulf flounder, *Paralichthys albigutta*, and southern flounder, *P. lethostigma*. Fishery Bulletin, 93:504-515.

Powell, A.B. and F.J. Schwartz. 1977. Distribution of Paralichthid flounders (Bothidae: *Paralichthys*) in North Carolina estuaries. Chesapeake Science, 18:334-339.

Powles, H. 1977. Larval distributions and recruitment hypotheses for snappers and groupers of the South Atlantic Bight. Proceedings Annual Conference of Southeastern Associations of Fish and Wildlife Agencies, 31:362-371.

Prus, K. 2013. Behavior and conservation of scalloped hammerheads (*Sphyrna lewini*) in the Eastern Tropical Pacific. Natural Sciences. Paper 1.

Quinn, J.F. and Nies, T.A. Omnibus Essential Fish Habitat Amendment 2 Final Environmental Impact Statement. Appendix A: EFH Supplementary Tables, Fry Species Information, and Spawning Information. New England Fishery Management Council. 2016. 45 p.

Reid, R., F. Almeida, and C. Zetlin. 1999. Essential fish habitat source document: Fishery independent surveys, data sources, and methods. U.S. Department of Commerce, NOAA Technical Memorandum NMFSNE-122. 39 p.

Reine KJ, Clarke DG, Engler RM. Entrainment by hydraulic dredges-A review of potential impacts. Army Engineer Waterways Experiment Station Vicksburg MS Environmental Lab; 1998.

Reine KJ, Clarke D, Dickerson C, Wikel G. Characterization of underwater sounds produced by trailing suction hopper dredges during sand mining and pump-out operations. Army Engineer Waterways Experiment Station Vicksburg MS Environmental Lab; 2014a.

Reine KJ, Dickerson C, Brodges T. Characterization of underwater sounds produced by a hydraulic cutterhead dredge during maintenance dredging in the Stockton Deepwater Shipping Channel, California. Army Engineer Waterways Experiment Station Vicksburg MS Environmental Lab; 2014b.

Robinson LM, Elith J, Hobday AJ, Pearson RG, Kendall BE, Possingham HP, Richardson AJ. Pushing the limits in marine species distribution modelling: lessons from the land present challenges and opportunities. *Global Ecology and Biogeography* 2011;20(6):789-802.

Robinson SP, Theobald PD, Lepper PA, Hayman G, Humphrey VF, Wang L-S, Mumford S. Measurement of underwater noise arising from marine aggregate operations. *The Effects of Noise on Aquatic Life*: Springer; 2012. p 465-468.

Rohde, F.C. and J.J. Francesconi. 1992. Assessment of North Carolina Commercial Finfisheries. Reef fish and coastal pelagic fisheries assessment. Job5. Completion Report Project 2-IJ-16. North Carolina Department of Natural Resources, Division of Marine Fisheries. 68 p.

Ross, S.W. and M.L. Moser. 1995. Life history of juvenile gag, *Mycteroperca microlepis*, in North Carolina estuaries. *Bulletin of Marine Science*, 56(1):222-237.

Rountree, R.A. and K.W. Able. 1997. Nocturnal fish use of New Jersey marsh creek and adjacent bay shoal habitats. *Estuarine, Coast, and Shelf Science*, 44:703-711.

Sackett, D.K., K.W. Able, and T.M. Grothues. 2007. Dynamics of Summer Flounder, *Paralichthys dentatus*, seasonal migrations based on ultrasonic telemetry. *Estuarine, Coastal and Shelf Science*, 74:119-130.

Sadovy de Mitcheson, Y. and P.L. Colin. 2011. Reef Fish Spawning Aggregations: Biology, Research, and Management. Springer Science and Business Media, New York, NY. 605 p.

Scott, W.B. and M.G. Scott. 1988. Atlantic Fishes of Canada. University of Toronto Press, Toronto, Canada. pp 541-557.

Sedberry, G.R. and M. Reichert. 2015. State Wildlife Action Plan (SWAP) Supplemental Volume: Species of Conservation Concern Gag, *Mycteroperca microlepis*. South Carolina Department of Natural Resources, Charleston, SC. 7 p.

Sedberry, G.R., O. Pashuk, D.M. Wyanski, J.A. Stephen, and P. Weinbach. 2006. Spawning locations for Atlantic reef fishes off the southeastern U.S. *Proceedings of the Gulf Caribbean Fisheries Institute*, 57:463-514.

Smith, C.L. 1971. A revision of the American Groupers: *Epinephelus* and allied genera. *Bulletin of American Museum of Natural History*, 146(2):67-241.

Smith W.G. and M.P. Fahay. 1970. Description of eggs and larvae of the Summer Flounder, *Paralichthys dentatus*. U.S. Fish and Wildlife Bureau of Sport Fisheries and Wildlife Research Report 75. 21 p.

South Atlantic Fishery Management Council. Fishery Ecosystem Plan II, South Atlantic Food Web and Connectivity. 2018. [http://safmc.net/uncategorized/fepii-south-atlantic-food-web-and-connectivity\\_march-2018/](http://safmc.net/uncategorized/fepii-south-atlantic-food-web-and-connectivity_march-2018/)

Suedel BC, Kim J, Clarke DG, Linkov I. A risk-informed decision framework for setting environmental windows for dredging projects. *Science of the total environment* 2008;403(1-3):1-11.

Sutton G, Boyd S, Augris C, Bonne W, Carlin D, Cato I, Cowling M, van Dalftsen J, Delpech J-P, Desprez M. Effects of extraction of marine sediments on the marine environment 1998-2004. International Council for the Exploration of the Sea; 2009.

Tobin, A.J., Mapleston, A., Harry, A.V. and M. Espinoza. Big fish in shallow water; use of an intertidal surf-zone habitat by large-bodied teleosts and elasmobranchs in tropical northern Australia. *Environmental Biology of Fishes*.

Tzeng, M.W., J.A. Hare, and D.G. Linquist. 2003. Ingress of transformation stage gray snapper, *Lutjanus griseus* (Pisces: Lutjanidae) through Beaufort Inlet, North Carolina. *Bull Mar Sci* 72:891-908.

USFWS. North Carolina Coastal Beach Sand Placement Statewide Programmatic Biological Opinion. August 28, 2017

USACE, 2010. Final Integrated Feasibility Report and Environmental Impact Statement, Coastal Storm Damage Reduction, Surf City and North Topsail Beach, North Carolina. December 2010.

USACE, 2014. Environmental Assessment for West Onslow Beach and New River Inlet (Topsail Beach) and Surf City and North Topsail Beach Coastal Storm Damage Reduction Projects, North Carolina. July 2014.

Utne-Palm AC. Visual feeding of fish in a turbid environment: physical and behavioural aspects. *Marine and Freshwater Behaviour and Physiology* 2002;35(1-2):111-128.

Van Dolah, R.F., P.H. Wendt, R.M. Martore, M.V. Levisen, and W.A. Roumillat. 1992. A physical and biological monitoring study of the Hilton Head Beach nourishment project. Final Report, prepared by the South Carolina Marine Resources Research Institute, SC Marine Resources Division for the Town of Hilton Head Island and the South Carolina Coastal Council. 159 pp.

Walsh, H.J., D.S. Peters, and D.P. Cyrus. 1999. Habitat utilization by small flatfishes in a North Carolina estuary. *Estuaries*, 22:803-813.

Ward Slacum, H. Jr. , Burton, W.H., Methratta, E.T., Weber, E.D., Llanso, R.J., Dew-Baxter, J. Assemblage Structure in Shoal and Flat-Bottom Habitats on the Inner Continental Shelf of the Middle Atlantic Bight, USA. *Marine and Coastal Fisheries* 2011; 2:1, p. 277-298.

Watanabe, W.O., S.C. Ellis, E.P. Ellis, and M.W. Feeley. 1999. Temperature effects on eggs and yolk sac larvae of the Summer Flounder at different salinities. *North American Journal of Aquaculture*, 61:267-277.

Wenner, C.A., J.C. McGovern, R. Martore, H.R. Beatty, and W.A. Roumillat. 1986. Ichthyofauna. In: DeVoe, M.R., and D.S. Baughman (eds.) *South Carolina coastal wetland impoundments: Ecological characterization, management, status and use*. Vol. II: Technical synthesis. South Carolina Sea Grant Consortium, Technical Report. SC-SG-TR-86-2. Charleston, South Carolina. Chap. 14, p. 414-526.

Wenner, C.A., W.A. Roumillat, J.E. Moran, Jr., M.B. Maddox, L.B. Daniel, III, and J.W. Smith. 1990. Investigations on the life history and population dynamics of marine recreational fishes in South Carolina: Part 1. Marine Resources Research Institute, South Carolina Wildlife and Marine Resources Department. Charleston, South Carolina. 180 p.

Wickliffe, L.C., F.C. Rohde, K.L. Riley, and J.A. Morris, Jr. (eds.). 2019. An Assessment of Fisheries Species to Inform Time-of-Year Restrictions for North Carolina and South Carolina. NOAA Technical Memorandum NOS NCCOS 263. 268 p.  
<https://doi.org/10.25923/7xdd-nw91>.

Wenger AS, Harvey E, Wilson S, Rawson C, Newman SJ, Clarke D, Saunders BJ, Browne N, Travers MJ, McIlwain JL and others. A critical analysis of the direct effects of dredging on fish. *Fish and Fisheries* 2017;18(5):967-985.

Wilber DH, Clarke DG. Biological effects of suspended sediments: a review of suspended sediment impacts on fish and shellfish with relation to dredging activities in estuaries. *North American Journal of Fisheries Management* 2001;21(4):855-875.

Zeeberg, J., Corten, A. and E.D. Graaf. 2006. Bycatch and release of pelagic megafauna in industrial trawler fisheries off Northwest Africa. *Fisheries Research* 78: 186-195.

## Appendix A: Medium and Low Impact Potential EFH

Table A-1. Fishes with EFH with expected medium to low impact potential.

	Life Stage	Season	Temp	Water Column Zone	Sand Affinity	Depth Range	Impact Potential
<b>Borrow Areas A and N</b>							
<b>Atlantic Butterfish</b>	Adults	All	X		X	X	Medium
<b>Atlantic Butterfish</b>	Eggs	All	X		X	X	Medium
<b>Atlantic Butterfish</b>	Larvae	All	X		X	X	Medium
<b>Banded Rudderfish</b>	Juveniles	All	unk		X	unk	Medium
<b>Windowpane Flounder</b>	Eggs	Fall, Winter, Spring	X		X	X	Medium
<b>Windowpane Flounder</b>	Larvae	All	X		X	X	Medium
<b>Borrow Area A Only</b>							
<b>Sailfish</b>	Eggs; Larvae; Spawning Adults	Spring, Summer, Fall	unk		X	unk	Medium
<b>Borrow Areas A and N</b>							
<b>Almaco Jack</b>	Adults	All	unk			X	Low
<b>Atlantic Spadefish</b>	Adults	All	unk	unk		X	Low
<b>Atlantic Spadefish</b>	Spawning Adults	Spring, Summer, Fall	unk	unk		unk	Low
<b>Black Grouper</b>	Adults	All	unk	unk		X	Low
<b>Black Grouper</b>	Juveniles	All	unk	unk		unk	Low
<b>Black Grouper</b>	Spawning Adults	All	unk	unk		unk	Low
<b>Blackfin Snapper</b>	Adults	All	unk	X	X		Low
<b>Blackfin Snapper</b>	Juveniles	All	unk	unk			Low
<b>Blueline Tilefish</b>	Adults	All	X	unk			Low
<b>Blueline Tilefish</b>	Spawning Adults	All	unk	unk			Low

	Life Stage	Season	Temp	Water Column Zone	Sand Affinity	Depth Range	Impact Potential
<b>Coney</b>	Adults	All	unk	unk		X	Low
<b>Cottonwick</b>	Adults	All	unk	unk		X	Low
<b>Cubera Snapper</b>	Adults	All	unk	unk			Low
<b>Cubera Snapper</b>	Juveniles	All	unk	unk		unk	Low
<b>Cubera Snapper</b>	Spawning Adults	Summer, Fall	unk	unk		unk	Low
<b>Gag</b>	Adults	All	unk	unk	X		Low
<b>Golden Tilefish</b>	Adults	All	X	X	X		Low
<b>Golden Tilefish</b>	Eggs	Spring, Summer, Fall	X		X		Low
<b>Golden Tilefish</b>	Juveniles	Winter, Spring	X	X	X		Low
<b>Golden Tilefish</b>	Juveniles	Summer, Fall		X	X		Low
<b>Golden Tilefish</b>	Larvae	Winter, Spring	X		X		Low
<b>Golden Tilefish</b>	Larvae	Summer, Fall			X		Low
<b>Goliath Grouper</b>	Adults	All	unk	unk		X	Low
<b>Graysby</b>	Adults	All	unk	unk		X	Low
<b>Graysby</b>	Spawning Adults	Summer	unk	unk		unk	Low
<b>Greater Amberjack</b>	Adults	All	unk				Low
<b>Greater Amberjack</b>	Juveniles	All	unk			unk	Low
<b>Greater Amberjack</b>	Spawning Adults	Winter, Spring, Summer	unk	unk		unk	Low
<b>Hogfish</b>	Adults	All	unk	unk		X	Low
<b>Hogfish</b>	Spawning Adults	Fall, Winter, Spring	unk	unk			Low
<b>Knobbed porgy</b>	Adults	All	unk	X		X	Low
<b>Knobbed porgy</b>	Spawning Adults	Spring, Summer	unk	unk		unk	Low



	Life Stage	Season	Temp	Water Column Zone	Sand Affinity	Depth Range	Impact Potential
<b>Lane Snapper</b>	Adults	All	unk	unk		X	Low
<b>Lane Snapper</b>	Larvae; Juveniles	All	unk	unk		unk	Low
<b>Lane Snapper</b>	Spawning Adults	All	unk	unk		unk	Low
<b>Lesser Amberjack</b>	Adults	All	unk				Low
<b>Longspine porgy</b>	Adults	All	unk	unk		X	Low
<b>Margate</b>	Adults	All	unk	unk	X		Low
<b>Misty Grouper</b>	Adults	All	unk	X			Low
<b>Misty Grouper</b>	Juveniles	All	unk	unk			Low
<b>Mutton Snapper</b>	Adults	All	unk	unk			Low
<b>Mutton Snapper</b>	Juveniles	All	unk	unk		unk	Low
<b>Nassau Grouper</b>	Adults	All	unk	unk		X	Low
<b>Nassau Grouper</b>	Juveniles	All	unk	unk		unk	Low
<b>Ocean Triggerfish</b>	Adults	All	unk	unk		X	Low
<b>Queen Snapper</b>	Adults	All	unk	X			Low
<b>Queen Snapper</b>	Spawning Adults	Spring	unk	unk		unk	Low
<b>Red Grouper</b>	Adults	All	unk	unk		X	Low
<b>Red Grouper</b>	Spawning Adults	Winter, Spring, Summer	unk	unk			Low
<b>Red Hind</b>	Adults	All	unk	unk		X	Low
<b>Red Hind</b>	Spawning Adults	Summer	unk	unk		unk	Low
<b>Red Porgy</b>	Juveniles	All	unk	unk	X		Low
<b>Red Snapper</b>	Adults	All	unk	unk		X	Low
<b>Red Snapper</b>	Juveniles	All	unk	unk		unk	Low
<b>Red Snapper</b>	Spawning Adults	All	unk	unk		unk	Low
<b>Rock Hind</b>	Adults	All	unk	X		X	Low
<b>Rock Hind</b>	Spawning Adults	Spring, Summer	unk	unk		unk	Low

	Life Stage	Season	Temp	Water Column Zone	Sand Affinity	Depth Range	Impact Potential
<b>Sailor's choice</b>	Adults	All	unk	unk		unk	Low
<b>Sailor's choice</b>	Larvae; Juveniles	All	unk	unk		X	Low
<b>Sand Tiger Shark</b>	Birthing	Spring	unk	unk		unk	Low
<b>Sandbar Shark</b>	Adults	All	unk	unk	X		Low
<b>Saucereye porgy</b>	Adults	All	unk	unk		X	Low
<b>Scalloped Hammerhead Shark</b>	Neonate/YOY	All	X	X	X		Low
<b>Scamp</b>	Adults	All	unk	unk			Low
<b>Scamp</b>	Spawning Adults	All	unk	unk		unk	Low
<b>Silk Snapper</b>	Adults	All	unk	unk			Low
<b>Silk Snapper</b>	Juveniles	All	unk	unk		unk	Low
<b>Silk Snapper</b>	Spawning Adults	Summer	unk	unk		unk	Low
<b>Smoothhound Shark Complex (Atlantic Stock)</b>	All	All	X	X	X		Low
<b>Smoothhound Shark Complex (Atlantic Stock)</b>	Mating	Spring, Summer, Fall	unk	unk			Low
<b>Snowy Grouper</b>	Adults	All	unk	unk			Low
<b>Snowy Grouper</b>	Juveniles	All	unk	unk		unk	Low
<b>Snowy Grouper</b>	Spawning Adults	Spring, Summer, Fall	unk	unk		unk	Low
<b>Speckled Hind</b>	Adults	All	unk	unk			Low
<b>Speckled Hind</b>	Spawning Adults	Spring, Summer, Fall	unk	unk		unk	Low

	Life Stage	Season	Temp	Water Column Zone	Sand Affinity	Depth Range	Impact Potential
<b>Spiny Lobster</b>	Adults	All	unk	X		unk	Low
<b>Spiny Lobster</b>	Juveniles	All	unk	X		unk	Low
<b>Spiny Lobster</b>	Puerulus	All	unk	X		unk	Low
<b>Spiny Lobster</b>	Spawning Adults	Spring, Summer, Fall	unk	X		unk	Low
<b>Summer Flounder</b>	Eggs	Fall, Winter, Spring	unk	unk	X		Low
<b>Summer Flounder</b>	Larvae	Fall, Winter, Spring	unk	unk	X		Low
<b>Vermilion Snapper</b>	Adults	All	unk	X			Low
<b>Vermilion Snapper</b>	Spawning Adults	Spring, Summer, Fall	unk	unk		unk	Low
<b>Warsaw Grouper</b>	Adults	All	unk	unk			Low
<b>Warsaw Grouper</b>	Spawning Adults	Spring	unk	unk		unk	Low
<b>White Grunt</b>	Adults	All	unk	unk		unk	Low
<b>White Grunt</b>	Spawning Adults	Spring, Summer, Fall	unk	unk		unk	Low
<b>Whitebone porgy</b>	Adults	All	unk	unk		X	Low
<b>Whitebone porgy</b>	Spawning Adults	Spring, Summer	unk	unk		unk	Low
<b>Windowpane Flounder</b>	Eggs	Summer			X	X	Low
<b>Windowpane Flounder</b>	Spawning Adults	Summer		unk	X	unk	Low
<b>Wreckfish</b>	Adults	All	unk	X			Low
<b>Wreckfish</b>	Spawning Adults	Winter, Spring	unk	unk		unk	Low
<b>Yellowedge Grouper</b>	Adults	All	unk	X			Low
<b>Yellowedge Grouper</b>	Spawning Adults	Spring, Summer, Fall	unk	unk		unk	Low

	Life Stage	Season	Temp	Water Column Zone	Sand Affinity	Depth Range	Impact Potential
<b>Yellowfin Grouper</b>	Adults	All	unk	unk		unk	Low
<b>Yellowmouth Grouper</b>	Adults	All	unk	unk		X	Low
<b>Yellowmouth Grouper</b>	Spawning Adults	All	unk	unk		unk	Low
<b>Yellowtail Snapper</b>	Adults	All	unk			X	Low
<b>Yellowtail Snapper</b>	Juveniles	All	unk	unk		unk	Low
<b>Yellowtail Snapper</b>	Spawning Adults	Spring, Summer	unk	unk		unk	Low
<b>Borrow Area N Only</b>							
<b>Blacktip Shark</b>	Juveniles; Adults	All	X	unk	X		Low
<b>Longfin Inshore Squid</b>	Pre-recruits	All	X			X	Low
<b>Longfin Inshore Squid</b>	Recruits	All	X			X	Low
<b>Longfin Inshore Squid</b>	Spawning Adults	All	unk	X		X	Low

## Appendix B: South Atlantic Predictive Models

Species	Variables in Predictive Models	Relative Influence (%)
<b>Blacknose Shark</b>		
	Velocity of west to east currents	40
	Concentration of chlorophyll in the surface waters during summer (mg m <sup>-3</sup> )	39
	km <sup>2</sup> of estuarine waters within 160 km of location	21
<b>Sandbar Shark</b>		
	Depth	55
	Bottom temperature in Fall	45
<b>Tiger Shark</b>		
	km <sup>2</sup> of estuarine wetlands within 160 km of location	40
	Time that the survey was conducted (00:00)	31
	Depth	29
<b>Red Snapper</b>		
	km <sup>2</sup> of estuarine wetlands within 160 km of location	34
	Depth	24
	Distance to shoreline (km)	22
	Velocity of west to east currents	20
<b>Black Sea Bass</b>		
	Concentration of chlorophyll in the surface waters during summer (mg m <sup>-3</sup> )	33
	Distance to shoreline (km)	25
	km <sup>2</sup> of estuarine waters within 160 km of location	22
	Distance to shoreline	20